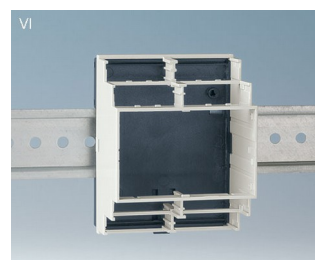
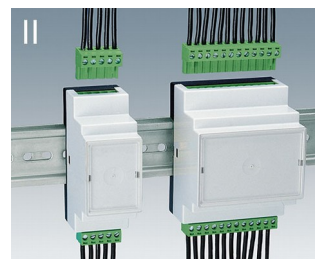
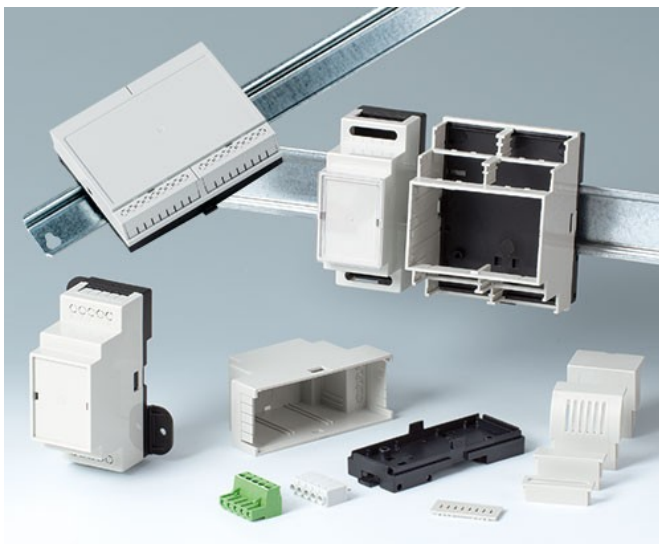


# RAILTEC B

## Versatile standard DIN rail enclosures

Our RAILTEC B series of plastic enclosures provides fast and simple mounting on to standard DIN EN 60715 TH35 rails.

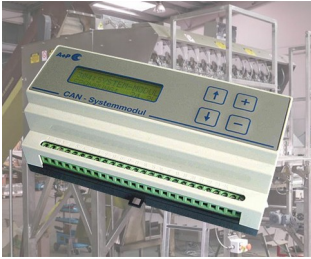
- six sizes (2 to 12 modules wide) according to DIN 43880, unit 1;
- four sizes (2, 4, 6 & 9 modules wide) with low profile - *NEW*: 2 versions;
- four sizes (2, 4, 6 & 9 modules wide) with flat/high connection level
- fully insulated and protected according to VBG 4 and IEC 529/DIN VDE 0470-1
- flame-resistant material (UL 94 V-0)
- **version I and XI**: for PCB terminal blocks 5.0/5.08 mm pitch
- **version II and XII**: for plug headers 5.0/5.08 mm pitch
- **version III and XIII**: closed case for front connectors, D-SUB connectors, etc.
- **version IV**: for PCB terminal blocks 5.0/5.08 mm pitch (1 row)
- **version V**: with knockout perforations 5.0 mm pitch
- **version VI**: open case for fitting different combinations of terminal guards and partition plate; optionally 1 or 2 connection levels
- KNX cover to fit 2 and 4 modules of series VI and flat top parts
- suitable for DIN rails EN 60715 TH35 or direct wall mounting
- with/without ventilation slots for good heat dissipation
- flexible assembly: PCB positioning in all 3 directions; base part with fixing pillars, top parts with guide ridges
- DIN rail clip pre-assembled in base part
- transparent lid (acc.) protects display and operation elements
- protection class < IP 40



# RAILTEC B

## Applications and Examples

- Universal use as installation case
- Corresponding to the regulations of the machine-building and motorcar industry
- Smart Factory / Industry 4.0
- Technical equipment for building automation and SMART-HOME
- Especially for the control equipment for example lighting systems



CAN BUS system module for packaging machines



Earthfault detection and short-circuit indicator



Industrial VDSL2/ADSL2 modems



Monitoring of electrical variables



Power measuring device for energy analysis



Remote meter for condition monitoring



Smart meter for electricity consumption



Water level detector

## Customising Options

What do you still need for your own very personal product? We can supply enclosures and tuning knobs with all necessary modifications for fitting your electronic components.  
Customising options for Railtec B



Machining



Lacquering



Printing



Laser marking



Decor foils



Installation / Assembly of accessories

# RAILTEC B

## Select Versions



**B6501110**  
RAILTEC B, 2 modules, Vers. V  
PC (UL 94 V-0)  
light grey RAL 7035  
35x86x58mm



**B6501111**  
RAILTEC B, 2 modules, Vers. I  
PC (UL 94 V-0)  
light grey RAL 7035  
35x86x58mm



**B6501112**  
RAILTEC B, 2 modules, Vers. II  
PC (UL 94 V-0)  
light grey RAL 7035  
35x86x58mm



**B6501113**  
RAILTEC B, 2 modules, Vers. III  
PC (UL 94 V-0)  
light grey RAL 7035  
35x86x58mm



**B6501114**  
RAILTEC B, 2 modules, Vers. I  
PC (UL 94 V-0)  
light grey RAL 7035  
35x86x58mm



**B6501115**  
RAILTEC B, 2 modules, Vers. II  
PC (UL 94 V-0)  
light grey RAL 7035  
35x86x58mm



**B6501116**  
RAILTEC B, 2 modules, Vers. III  
PC (UL 94 V-0)  
light grey RAL 7035  
35x86x58mm



**B6501117**  
RAILTEC B, 2 modules, Vers. IV  
PC (UL 94 V-0)  
light grey RAL 7035  
35x86x58mm



**B6501118**  
RAILTEC B, 2 modules, Vers. IV  
PC (UL 94 V-0)  
light grey RAL 7035  
35x86x58mm



**B6501119**  
RAILTEC B, 2 modules, Vers. V  
PC (UL 94 V-0)  
light grey RAL 7035  
35x86x58mm



**B6501121**  
RAILTEC B, 2 modules, Vers. VI  
PC (UL 94 V-0)  
light grey RAL 7035  
35x90x58mm



**B6501223**  
RAILTEC B, 2 modules, Vers. III  
low profile  
PC (UL 94 V-0)  
light grey RAL 7035  
35x86x31.25mm



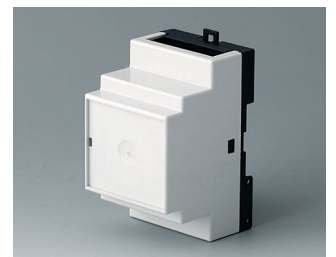
**B6501229**  
RAILTEC B, 2 modules, Vers.  
low profile  
PC (UL 94 V-0)  
light grey RAL 7035  
35x89.6x31.25mm



**B6502110**  
RAILTEC B, 3 modules, Vers. V  
PC (UL 94 V-0)  
light grey RAL 7035  
52.5x86x58mm

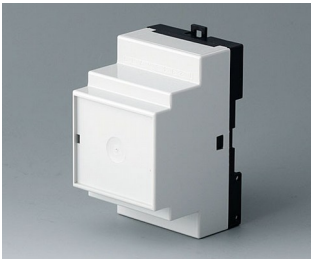


**B6502111**  
RAILTEC B, 3 modules, Vers. I  
PC (UL 94 V-0)  
light grey RAL 7035  
52.5x86x58mm



**B6502112**  
RAILTEC B, 3 modules, Vers. II  
PC (UL 94 V-0)  
light grey RAL 7035  
52.5x86x58mm

# RAILTEC B



**B6502113**  
RAILTEC B, 3 modules, Vers. III  
PC (UL 94 V-0)  
light grey RAL 7035  
52.5x86x58mm



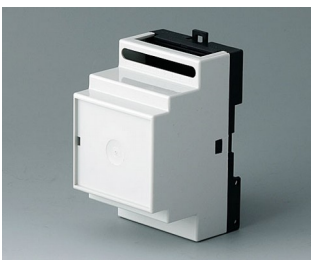
**B6502114**  
RAILTEC B, 3 modules, Vers. I  
PC (UL 94 V-0)  
light grey RAL 7035  
52.5x86x58mm



**B6502115**  
RAILTEC B, 3 modules, Vers. II  
PC (UL 94 V-0)  
light grey RAL 7035  
52.5x86x58mm



**B6502116**  
RAILTEC B, 3 modules, Vers. III  
PC (UL 94 V-0)  
light grey RAL 7035  
52.5x86x58mm



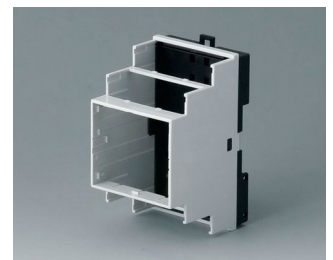
**B6502117**  
RAILTEC B, 3 modules, Vers. IV  
PC (UL 94 V-0)  
light grey RAL 7035  
52.5x86x58mm



**B6502118**  
RAILTEC B, 3 modules, Vers. IV  
PC (UL 94 V-0)  
light grey RAL 7035  
52.5x86x58mm



**B6502119**  
RAILTEC B, 3 modules, Vers. V  
PC (UL 94 V-0)  
light grey RAL 7035  
52.5x86x58mm



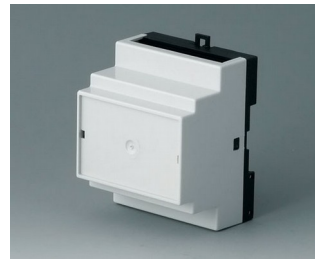
**B6502121**  
RAILTEC B, 3 modules, Vers. VI  
PC (UL 94 V-0)  
light grey RAL 7035  
52.5x90x58mm



**B6503110**  
RAILTEC B, 4 modules, Vers. V  
PC (UL 94 V-0)  
light grey RAL 7035  
70x86x58mm



**B6503111**  
RAILTEC B, 4 modules, Vers. I  
PC (UL 94 V-0)  
light grey RAL 7035  
70x86x58mm



**B6503112**  
RAILTEC B, 4 modules, Vers. II  
PC (UL 94 V-0)  
light grey RAL 7035  
70x86x58mm



**B6503113**  
RAILTEC B, 4 modules, Vers. III  
PC (UL 94 V-0)  
light grey RAL 7035  
70x86x58mm



**B6503114**  
RAILTEC B, 4 modules, Vers. I  
PC (UL 94 V-0)  
light grey RAL 7035  
70x86x58mm



**B6503115**  
RAILTEC B, 4 modules, Vers. II  
PC (UL 94 V-0)  
light grey RAL 7035  
70x86x58mm



**B6503116**  
RAILTEC B, 4 modules, Vers. III  
PC (UL 94 V-0)  
light grey RAL 7035  
70x86x58mm



**B6503117**  
RAILTEC B, 4 modules, Vers. IV  
PC (UL 94 V-0)  
light grey RAL 7035  
70x86x58mm

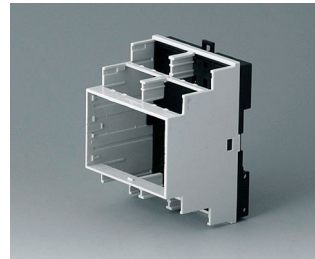
# RAILTEC B



**B6503118**  
RAILTEC B, 4 modules, Vers. IV  
PC (UL 94 V-0)  
light grey RAL 7035  
70x86x58mm



**B6503119**  
RAILTEC B, 4 modules, Vers. V  
PC (UL 94 V-0)  
light grey RAL 7035  
70x86x58mm



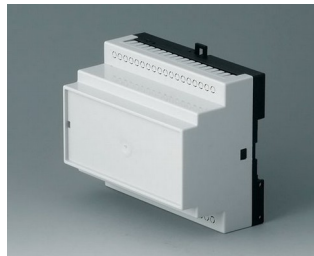
**B6503121**  
RAILTEC B, 4 modules, Vers. VI  
PC (UL 94 V-0)  
light grey RAL 7035  
70x90x58mm



**B6503223**  
RAILTEC B, 4 modules, Vers. III  
low profile  
PC (UL 94 V-0)  
light grey RAL 7035  
70x86x31.25mm



**B6503229**  
RAILTEC B, 4 modules, Vers.  
low profile  
PC (UL 94 V-0)  
light grey RAL 7035  
70x89.6x31.25mm



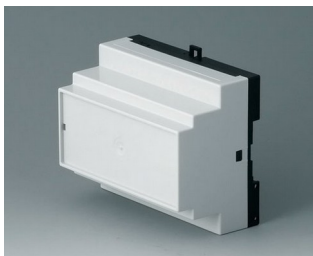
**B6504110**  
RAILTEC B, 6 modules, Vers. V  
PC (UL 94 V-0)  
light grey RAL 7035  
105x86x59mm



**B6504111**  
RAILTEC B, 6 modules, Vers. I  
PC (UL 94 V-0)  
light grey RAL 7035  
105x86x59mm



**B6504112**  
RAILTEC B, 6 modules, Vers. II  
PC (UL 94 V-0)  
light grey RAL 7035  
105x86x59mm



**B6504113**  
RAILTEC B, 6 modules, Vers. III  
PC (UL 94 V-0)  
light grey RAL 7035  
105x86x59mm



**B6504114**  
RAILTEC B, 6 modules, Vers. I  
PC (UL 94 V-0)  
light grey RAL 7035  
105x86x59mm



**B6504115**  
RAILTEC B, 6 modules, Vers. II  
PC (UL 94 V-0)  
light grey RAL 7035  
105x86x59mm



**B6504116**  
RAILTEC B, 6 modules, Vers. III  
PC (UL 94 V-0)  
light grey RAL 7035  
105x86x59mm



**B6504117**  
RAILTEC B, 6 modules, Vers. IV  
PC (UL 94 V-0)  
light grey RAL 7035  
105x86x59mm



**B6504118**  
RAILTEC B, 6 modules, Vers. IV  
PC (UL 94 V-0)  
light grey RAL 7035  
105x86x59mm



**B6504119**  
RAILTEC B, 6 modules, Vers. V  
PC (UL 94 V-0)  
light grey RAL 7035  
105x86x59mm



**B6504121**  
RAILTEC B, 6 modules, Vers. VI  
PC (UL 94 V-0)  
light grey RAL 7035  
105x90x58mm

# RAILTEC B



**B6504223**  
RAILTEC B, 6 modules, Vers. III  
low profile  
PC (UL 94 V-0)  
light grey RAL 7035  
105x86x31.25mm



**B6504229**  
RAILTEC B, 6 modules, Vers.  
low profile  
PC (UL 94 V-0)  
light grey RAL 7035  
105x89.6x31.25mm



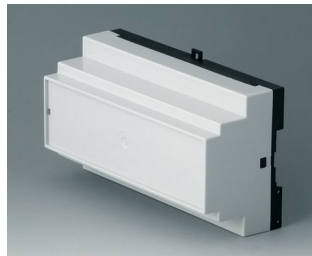
**B6505110**  
RAILTEC B, 9 modules, Vers. V  
PC (UL 94 V-0)  
light grey RAL 7035  
157x86x59mm



**B6505111**  
RAILTEC B, 9 modules, Vers. I  
PC (UL 94 V-0)  
light grey RAL 7035  
157x86x59mm



**B6505112**  
RAILTEC B, 9 modules, Vers. II  
PC (UL 94 V-0)  
light grey RAL 7035  
157x86x59mm



**B6505113**  
RAILTEC B, 9 modules, Vers. III  
PC (UL 94 V-0)  
light grey RAL 7035  
157x86x59mm



**B6505114**  
RAILTEC B, 9 modules, Vers. I  
PC (UL 94 V-0)  
light grey RAL 7035  
157x86x59mm



**B6505115**  
RAILTEC B, 9 modules, Vers. II  
PC (UL 94 V-0)  
light grey RAL 7035  
157x86x59mm



**B6505116**  
RAILTEC B, 9 modules, Vers. III  
PC (UL 94 V-0)  
light grey RAL 7035  
157x86x59mm



**B6505117**  
RAILTEC B, 9 modules, Vers. IV  
PC (UL 94 V-0)  
light grey RAL 7035  
157x86x59mm



**B6505118**  
RAILTEC B, 9 modules, Vers. IV  
PC (UL 94 V-0)  
light grey RAL 7035  
157x86x59mm



**B6505119**  
RAILTEC B, 9 modules, Vers. V  
PC (UL 94 V-0)  
light grey RAL 7035  
157x86x59mm



**B6505121**  
RAILTEC B, 9 modules, Vers. VI  
PC (UL 94 V-0)  
light grey RAL 7035  
157x90x58mm



**B6505223**  
RAILTEC B, 9 modules, Vers. III  
low profile  
PC (UL 94 V-0)  
light grey RAL 7035  
157x86x31.25mm



**B6505229**  
RAILTEC B, 9 modules, Vers.  
low profile  
PC (UL 94 V-0)  
light grey RAL 7035  
157.5x89.6x31.25mm

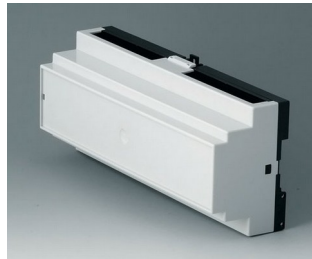


**B6506110**  
RAILTEC B, 12 modules, Vers. V  
PC (UL 94 V-0)  
light grey RAL 7035  
210x90x58mm

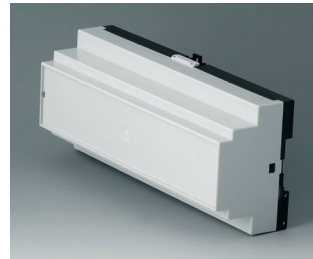
# RAILTEC B



**B6506111**  
RAILTEC B, 12 modules, Vers. I  
PC (UL 94 V-0)  
light grey RAL 7035  
210x90x58mm



**B6506112**  
RAILTEC B, 12 modules, Vers. II  
PC (UL 94 V-0)  
light grey RAL 7035  
210x90x58mm



**B6506113**  
RAILTEC B, 12 modules, Vers. III  
PC (UL 94 V-0)  
light grey RAL 7035  
210x90x58mm



**B6506114**  
RAILTEC B, 12 modules, Vers. I  
PC (UL 94 V-0)  
light grey RAL 7035  
210x90x58mm



**B6506115**  
RAILTEC B, 12 modules, Vers. II  
PC (UL 94 V-0)  
light grey RAL 7035  
210x90x58mm



**B6506116**  
RAILTEC B, 12 modules, Vers. III  
PC (UL 94 V-0)  
light grey RAL 7035  
210x90x58mm



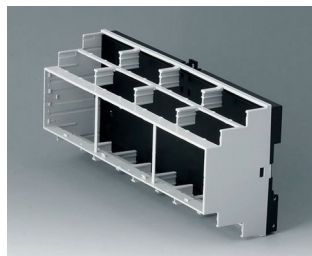
**B6506117**  
RAILTEC B, 12 modules, Vers. IV  
PC (UL 94 V-0)  
light grey RAL 7035  
210x90x58mm



**B6506118**  
RAILTEC B, 12 modules, Vers. IV  
PC (UL 94 V-0)  
light grey RAL 7035  
210x90x58mm



**B6506119**  
RAILTEC B, 12 modules, Vers. V  
PC (UL 94 V-0)  
light grey RAL 7035  
210x90x58mm



**B6506121**  
RAILTEC B, 12 modules, Vers. VI  
PC (UL 94 V-0)  
light grey RAL 7035  
210x90x58mm



**B6511111**  
RAILTEC B, 2 modules, Vers. XI  
PC (UL 94 V-0)  
light grey RAL 7035  
35x86x58mm



**B6511112**  
RAILTEC B, 2 modules, Vers. XII  
PC (UL 94 V-0)  
light grey RAL 7035  
35x86x58mm



**B6511113**  
RAILTEC B, 2 modules, Vers. XIII  
PC (UL 94 V-0)  
light grey RAL 7035  
35x86x58mm



**B6513111**  
RAILTEC B, 4 modules, Vers. XI  
PC (UL 94 V-0)  
light grey RAL 7035  
70x86x58mm



**B6513112**  
RAILTEC B, 4 modules, Vers. XII  
PC (UL 94 V-0)  
light grey RAL 7035  
70x86x58mm



**B6513113**  
RAILTEC B, 4 modules, Vers. XIII  
PC (UL 94 V-0)  
light grey RAL 7035  
70x86x58mm

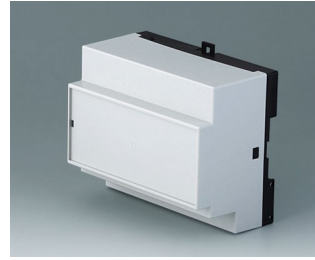
# RAILTEC B



**B6514111**  
RAILTEC B, 6 modules, Vers. XI  
PC (UL 94 V-0)  
light grey RAL 7035  
105x86x59mm



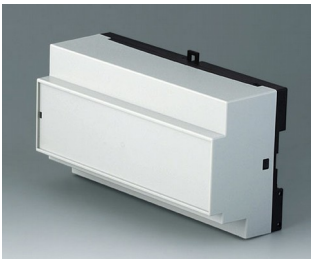
**B6514112**  
RAILTEC B, 6 modules, Vers. XII  
PC (UL 94 V-0)  
light grey RAL 7035  
105x86x59mm



**B6514113**  
RAILTEC B, 6 modules, Vers.  
XIII  
PC (UL 94 V-0)  
light grey RAL 7035  
105x86x59mm



**B6515111**  
RAILTEC B, 9 modules, Vers. XI  
PC (UL 94 V-0)  
light grey RAL 7035  
157x86x59mm



**B6515112**  
RAILTEC B, 9 modules, Vers. XII  
PC (UL 94 V-0)  
light grey RAL 7035  
157x86x59mm



**B6515113**  
RAILTEC B, 9 modules, Vers.  
XIII  
PC (UL 94 V-0)  
light grey RAL 7035  
157x86x59mm

## Accessory "wall/holder"

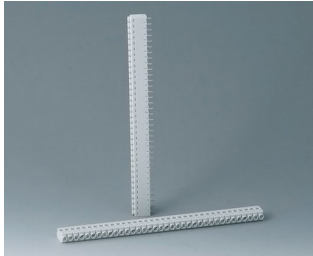


**B6600334**  
Wall suspension elements  
PPO (UL 94 V-0)  
black

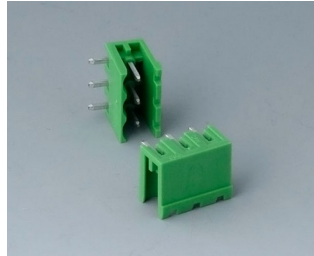


# RAILTEC B

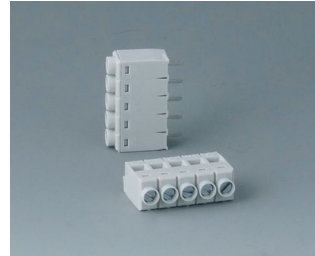
## Accessory "terminals"



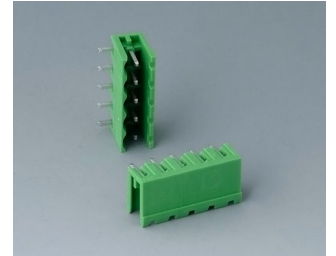
**B6600111**  
Terminal block, block 5.0  
PA 68 (UL 94 V-0)  
light grey



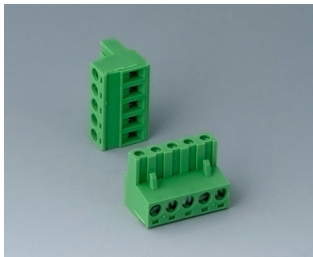
**B6600222**  
Plug header, block 5.08  
PA 68 (UL 94 V-0)



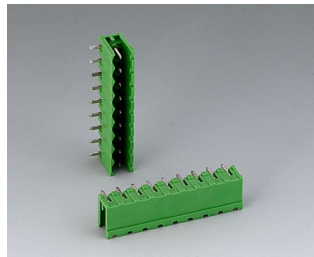
**B6601111**  
Terminal block, block 5.0  
PA 68 (UL 94 V-0)



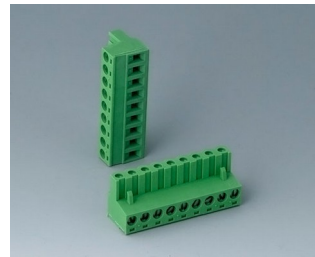
**B6601222**  
Plug header, block 5.08  
PA 6 (UL 94 V-0)



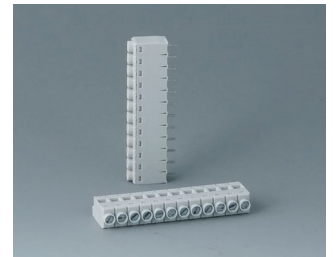
**B6601223**  
Plug header, block 5.08  
PA 6 (UL 94 V-0)



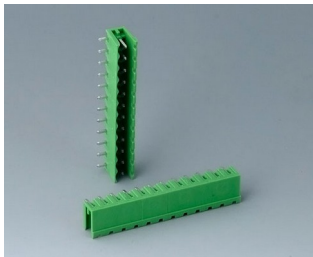
**B6602222**  
Plug header, block 5.08  
PA 6 (UL 94 V-0)



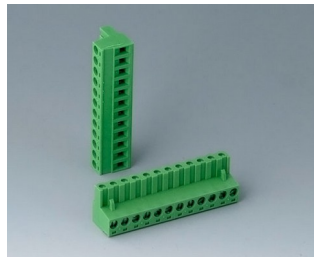
**B6602223**  
Plug header, block 5.08  
PA 6 (UL 94 V-0)



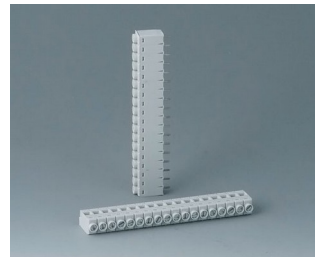
**B6603111**  
Terminal block, block 5.0  
PA 68 (UL 94 V-0)



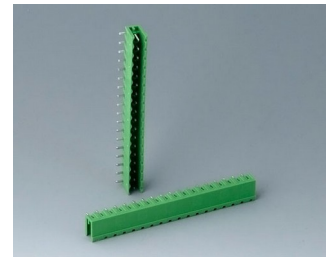
**B6603222**  
Plug header, block 5.08  
PA 6 (UL 94 V-0)



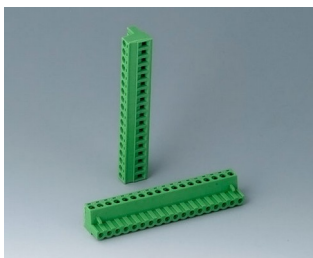
**B6603223**  
Plug header, block 5.08  
PA 6 (UL 94 V-0)



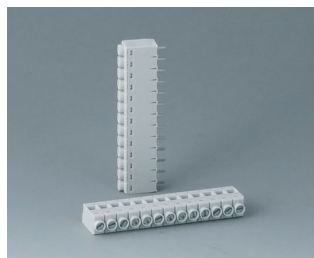
**B6604111**  
Terminal block, block 5.0  
PA 68 (UL 94 V-0)



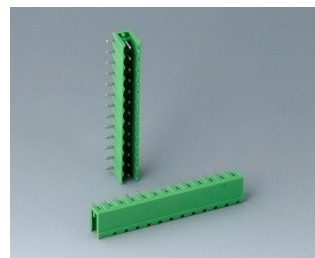
**B6604222**  
Plug header, block 5.08  
PA 68 (UL 94 V-0)



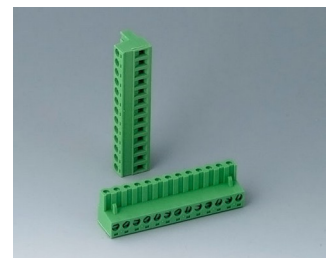
**B6604223**  
Plug header, block 5.08  
PA 68 (UL 94 V-0)



**B6605111**  
Terminal block, block 5.0  
PA 68 (UL 94 V-0)

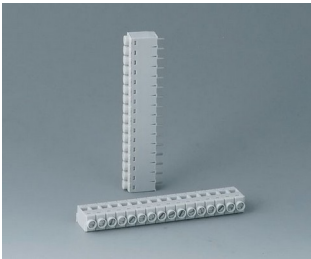


**B6605222**  
Plug header, block 5.08  
PA 6 (UL 94 V-0)

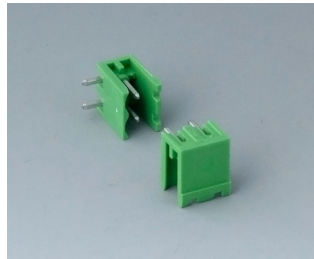


**B6605223**  
Plug header, block 5.08  
PA 6 (UL 94 V-0)

# RAILTEC B



**B6606111**  
 Terminal block, block 5.0  
 PA 68 (UL 94 V-0)



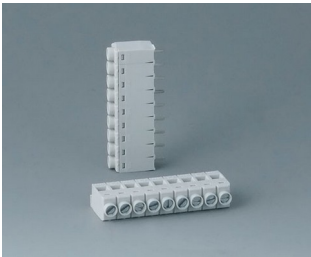
**B6606222**  
 Plug header, block 5.08  
 PA 6 (UL 94 V-0)



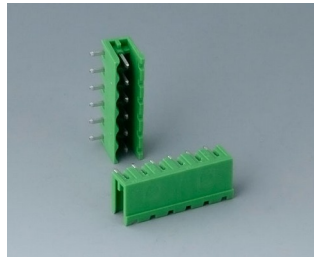
**B6606223**  
 Plug header, block 5.08  
 PA 6 (UL 94 V-0)



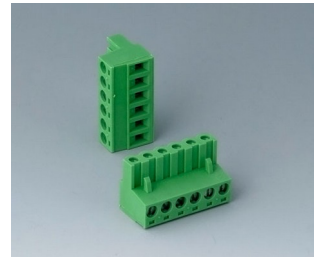
**B6607111**  
 Terminal block, block 5.0  
 PA 68 (UL 94 V-0)



**B6608111**  
 Terminal block, block 5.0  
 PA 68 (UL 94 V-0)



**B6608222**  
 Plug header, block 5.08  
 PA 68 (UL 94 V-0)



**B6608223**  
 Plug header, block 5.08  
 PA 68 (UL 94 V-0)

## Accessory "terminal guards"



**B6607140**  
 Terminal guards, flat  
 PC (UL 94 V-0)  
 light grey



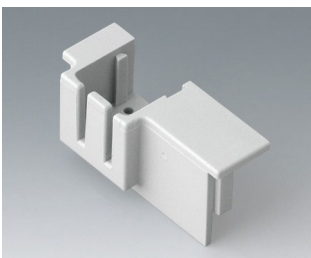
**B6607141**  
 Terminal guards, flat  
 PC (UL 94 V-0)  
 light grey



**B6607142**  
 Terminal guards, flat  
 PC (UL 94 V-0)  
 light grey



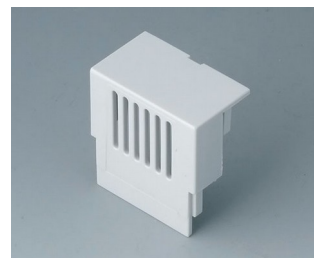
**B6607143**  
 Terminal guards, flat  
 PC (UL 94 V-0)  
 light grey



**B6607145**  
 KNX Cover, flat  
 PC (UL 94 V-0)  
 light grey



**B6607160**  
 Terminal guards, high  
 PC (UL 94 V-0)  
 light grey



**B6607161**  
 Terminal guards, high  
 PC (UL 94 V-0)  
 light grey

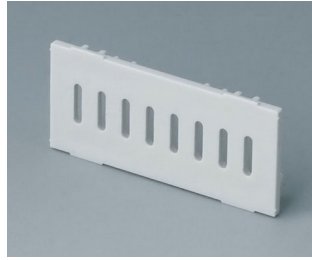


**B6607162**  
 Terminal guards, high  
 PC (UL 94 V-0)  
 light grey

# RAILTEC B



**B6607163**  
Terminal guards, high  
PC (UL 94 V-0)  
light grey



**B6607191**  
Partition plate  
PC (UL 94 V-0)  
light grey



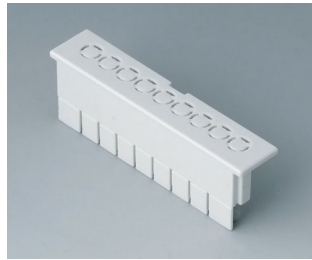
**B6608140**  
Terminal guards, flat  
PC (UL 94 V-0)  
light grey



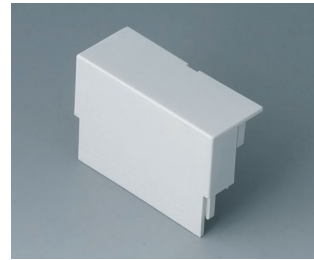
**B6608141**  
Terminal guards, flat  
PC (UL 94 V-0)  
light grey



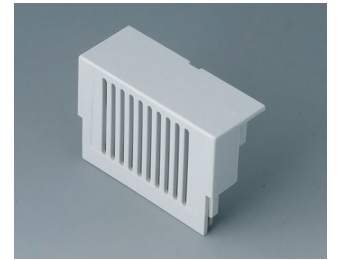
**B6608142**  
Terminal guards, flat  
PC (UL 94 V-0)  
light grey



**B6608143**  
Terminal guards, flat  
PC (UL 94 V-0)  
light grey



**B6608160**  
Terminal guards, high  
PC (UL 94 V-0)  
light grey



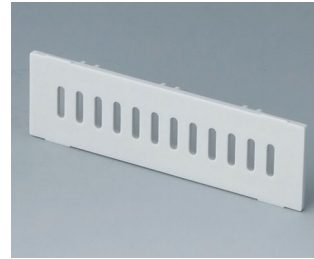
**B6608161**  
Terminal guards, high  
PC (UL 94 V-0)  
light grey



**B6608162**  
Terminal guards, high  
PC (UL 94 V-0)  
light grey



**B6608163**  
Terminal guards, high  
PC (UL 94 V-0)  
light grey



**B6608191**  
Partition plate  
PC (UL 94 V-0)  
light grey

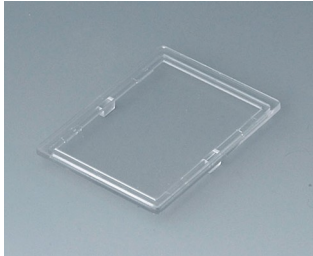
## Accessory "screws"



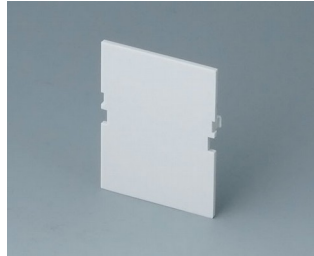
**A0305031**  
Self-tapping screws 2.5 x 6 mm  
(PZ1)

# RAILTEC B

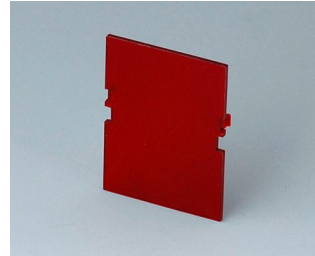
## Accessory



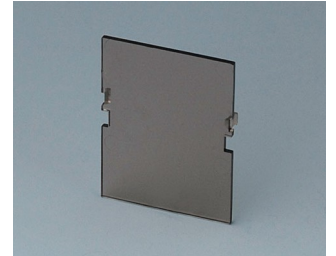
**B6601100**  
Lid, 2 modules  
PC (UL 94 V-0)  
transparent



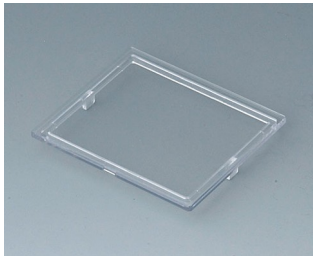
**B6601180**  
Front panel, 2 modules, Vers. VI  
PC (UL 94 V-0)  
light grey  
32x42mm



**B6601480**  
Front panel, 2 modules, Vers. VI  
PC (UL 94 V-0)  
red transparent  
32x42mm



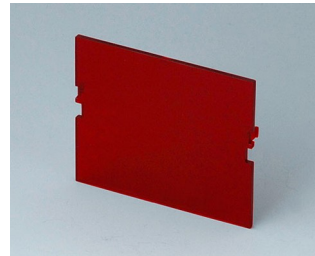
**B6601580**  
Front panel, 2 modules, Vers. VI  
PC (UL 94 V-0)  
smoked glass  
32x42mm



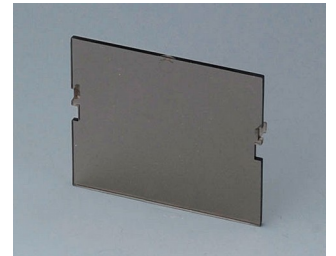
**B6602100**  
Lid, 3 modules  
PC (UL 94 V-0)  
transparent



**B6602180**  
Front panel, 3 modules, Vers. VI  
PC (UL 94 V-0)  
light grey  
49x42mm



**B6602480**  
Front panel, 3 modules, Vers. VI  
PC (UL 94 V-0)  
red transparent  
49x42mm



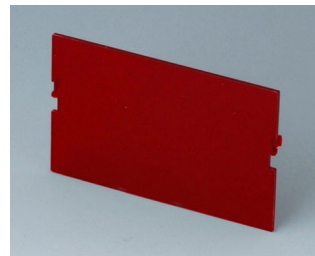
**B6602580**  
Front panel, 3 modules, Vers. VI  
PC (UL 94 V-0)  
smoked glass  
42x49mm



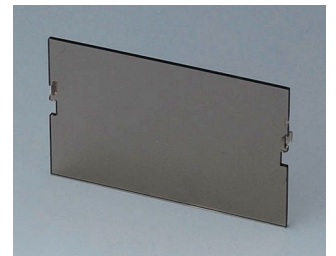
**B6603100**  
Lid, 4 modules  
PC (UL 94 V-0)  
transparent



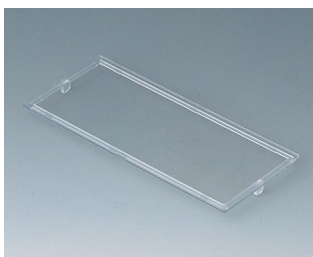
**B6603180**  
Front panel, 4 modules, Vers. VI  
PC (UL 94 V-0)  
light grey  
67x42mm



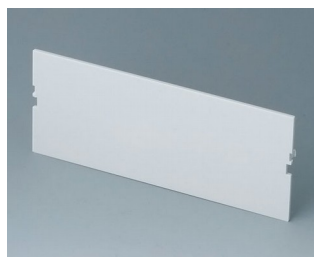
**B6603480**  
Front panel, 4 modules, Vers. VI  
PC (UL 94 V-0)  
red transparent  
67x42mm



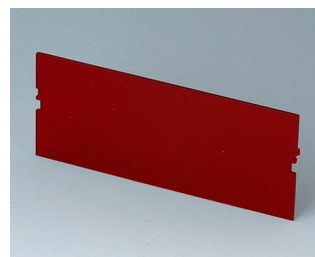
**B6603580**  
Front panel, 4 modules, Vers. VI  
PC (UL 94 V-0)  
smoked glass  
67x42mm



**B6604100**  
Lid, 6 modules  
PC (UL 94 V-0)  
transparent



**B6604180**  
Front panel, 6 modules, Vers. VI  
PC (UL 94 V-0)  
light grey  
102x42mm

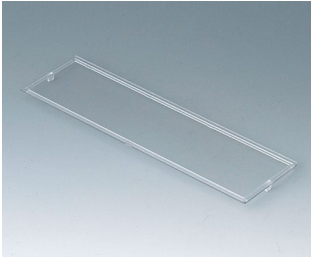


**B6604480**  
Front panel, 6 modules, Vers. VI  
PC (UL 94 V-0)  
red transparent  
102x42mm

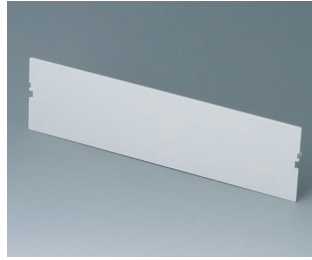


**B6604580**  
Front panel, 6 modules, Vers. VI  
PC (UL 94 V-0)  
smoked glass  
102x42mm

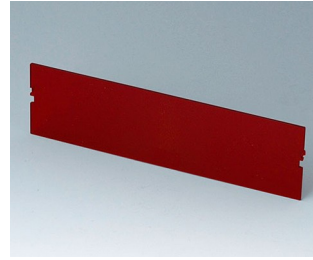
# RAILTEC B



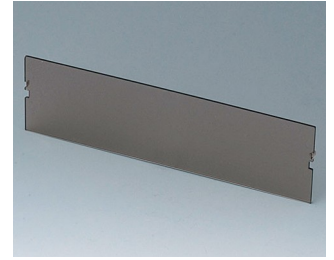
**B6605100**  
 Lid, 9 modules  
 PC (UL 94 V-0)  
 transparent



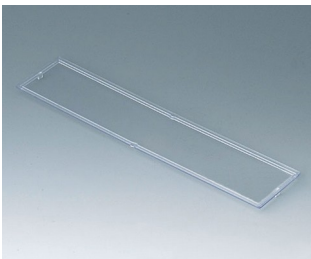
**B6605180**  
 Front panel, 9 modules, Vers. VI  
 PC (UL 94 V-0)  
 light grey  
 155x42mm



**B6605480**  
 Front panel, 9 modules, Vers. VI  
 PC (UL 94 V-0)  
 red transparent  
 155x42mm



**B6605580**  
 Front panel, 9 modules, Vers. VI  
 PC (UL 94 V-0)  
 smoked glass  
 155x42mm



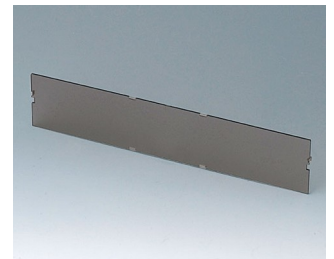
**B6606100**  
 Lid, 12 modules  
 PC (UL 94 V-0)  
 transparent



**B6606180**  
 Front panel, 12 modules, Vers. VI  
 PC (UL 94 V-0)  
 light grey  
 206x42mm



**B6606480**  
 Front panel, 12 modules, Vers. VI  
 PC (UL 94 V-0)  
 red transparent  
 206x42mm



**B6606580**  
 Front panel, 12 modules, Vers. VI  
 PC (UL 94 V-0)  
 smoked glass  
 206x42mm

Subject to technical modification without notice. © by OKW Gehäusesysteme, Buchen/Germany.