

# COMMUNITEC

## Modern, large-format table top enclosures for comfortable interaction and visualisation

The COMMUNITEC enclosure range is ideal for housing large-format electronic assemblies in an elegant, modern, design-oriented package. A key feature is the recessed handle concealed behind the operating panel, which allows the units to be carried comfortably and provides greater flexibility in use.

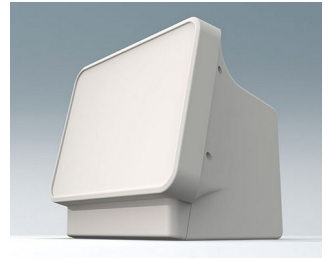
- Modern and functional design
- Integrated handle and carrying function for efficient handling
- Two sizes available; different colour combinations possible
- Operating panel with a recessed area to protect membrane keypads or large-format 11.5" - 14" (29 - 35 cm) displays, as well as a flat surface for front mounted operating elements and connectors
- Large side areas for connectors, ventilation slots for increased heat dissipation, or for fitting measuring instruments
- Rear of enclosure features a recessed area to protect built in sockets, plugs and supply cables; includes an additional recess for a product label
- Four part design: basic housing, operating panel, handle recess panel and bottom panel – available as separate components for individual colour combinations
- High degree of configuration flexibility: fastening pillars for PCBs and components in the basic housing, in the operating panel, and on the bottom panel
- Easy assembly/installation: efficient assembly of the bottom panel outside the housing. The bottom panel, together with the electronic unit, can then be mounted into the COMMUNITEC basic housing. Particularly easy installation and servicing thanks to good access to pre assembled components – from above through the opening for the handle recess panel and/or from the front.
- Includes self adhesive, non slip feet for reliable positioning
- Protection class IP40

## Designer statement

"COMMUNITEC is a desktop enclosure designed to balance the demands of digital and analogue technology. At its centre sits a generously sized, ergonomically inclined display and control panel that provides ample space for your user interface. Behind this, set back from the front, is a deep installation area for both electronic and mechanical components. The elegant, seemingly floating front frame is organically integrated into the main body, making its proportions appear smaller. The base beneath the front of the housing offers a mounting surface for connections to elements that complement your system on the desk. A concealed access point on the rear of the front section also allows your product to be transported securely to its place of use."

Martin Nußberger, polyform Industrie Design

# COMMUNITEC



## Applications and Examples

Medical equipment, e.g. for patient monitoring, diagnosis and surveillance, for example for ventilators, neuromonitoring and much more. Aesthetic medicine, e.g. laser treatment, foot care and for IPL (Intense Pulsed Light) applications. Versatile measuring and testing devices in laboratories, testing technology, automation, etc. For fault analysis and quality control. Oscilloscopes with a wide range of functions.



Foot care device



Impedance Analysis



Material analysis in R&D and for damage analysis



Patient monitoring system



Testing device for battery systems

# COMMUNITEC

## Customising Options

What do you still need for your own very personal product? We can supply enclosures and tuning knobs with all necessary modifications for fitting your electronic components.  
Customising options for Communitec



Machining



Lacquering



Printing



Laser marking



Decor foils



EMC shielding



Installation / Assembly  
of accessories

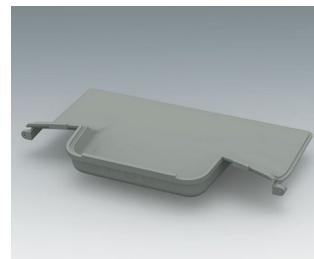
## Select Versions



**C3602407**  
Operating panel S  
ASA+PC (UL 94 V-0)  
traffic white RAL 9016  
284x68x244mm



**C3602408**  
Operating panel S  
ASA+PC (UL 94 V-0)  
anthracite grey RAL 7016  
284x68x244mm



**C3602601**  
Handle recess panel  
ASA+PC (UL 94 V-0)  
traffic grey A RAL 7042



**C3602607**  
Handle recess panel  
ASA+PC (UL 94 V-0)  
traffic white RAL 9016



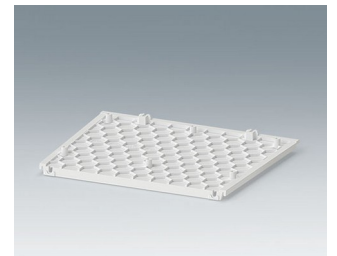
**C3602608**  
Handle recess panel  
ASA+PC (UL 94 V-0)  
anthracite grey RAL 7016



**C3602707**  
COMMUNITEC S, basic housing  
ASA+PC (UL 94 V-0)  
traffic white RAL 9016  
280x169x242mm  
IP 40



**C3602708**  
COMMUNITEC S, basic housing  
ASA+PC (UL 94 V-0)  
anthracite grey RAL 7016  
280x169x242mm  
IP 40



**C3602807**  
Bottom panel  
ASA+PC (UL 94 V-0)  
traffic white RAL 9016  
188x150x5mm

# COMMUNITEC



**C3602808**  
Bottom panel  
ASA+PC (UL 94 V-0)  
anthracite grey RAL 7016  
188x150x5mm



**C3604407**  
Operating panel M  
ASA+PC (UL 94 V-0)  
traffic white RAL 9016  
328x78x275mm



**C3604408**  
Operating panel M  
ASA+PC (UL 94 V-0)  
anthracite grey RAL 7016  
328x78x275mm



**C3604707**  
COMMUNITEC M, basic housing  
ASA+PC (UL 94 V-0)  
traffic white RAL 9016  
340x194x273mm  
IP 40



**C3604708**  
COMMUNITEC M, basic housing  
ASA+PC (UL 94 V-0)  
anthracite grey RAL 7016  
340x194x273mm  
IP 40

## System components to complete



**C3602407**  
Operating panel S  
ASA+PC (UL 94 V-0)  
traffic white RAL 9016  
284x68x244mm



**C3602408**  
Operating panel S  
ASA+PC (UL 94 V-0)  
anthracite grey RAL 7016  
284x68x244mm



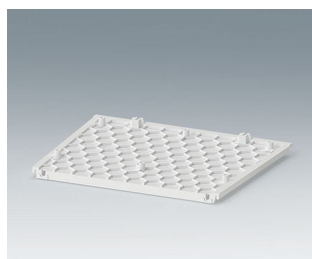
**C3602601**  
Handle recess panel  
ASA+PC (UL 94 V-0)  
traffic grey A RAL 7042



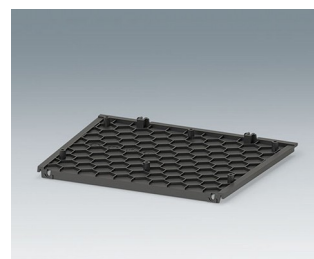
**C3602607**  
Handle recess panel  
ASA+PC (UL 94 V-0)  
traffic white RAL 9016



**C3602608**  
Handle recess panel  
ASA+PC (UL 94 V-0)  
anthracite grey RAL 7016



**C3602807**  
Bottom panel  
ASA+PC (UL 94 V-0)  
traffic white RAL 9016  
188x150x5mm



**C3602808**  
Bottom panel  
ASA+PC (UL 94 V-0)  
anthracite grey RAL 7016  
188x150x5mm



**C3604407**  
Operating panel M  
ASA+PC (UL 94 V-0)  
traffic white RAL 9016  
328x78x275mm

# COMMUNITEC



C3604408

Operating panel M  
ASA+PC (UL 94 V-0)  
anthracite grey RAL 7016  
328x78x275mm

## Accessory "screws"



A0325060

Self-tapping screw 2.5 x 6 mm  
(T8)  
Stainless steel

Subject to technical modification without notice. © by OKW Gehäusesysteme, Buchen/Germany.