

APACER TECHNOLOGY INC.

# COMPANY PROFILE

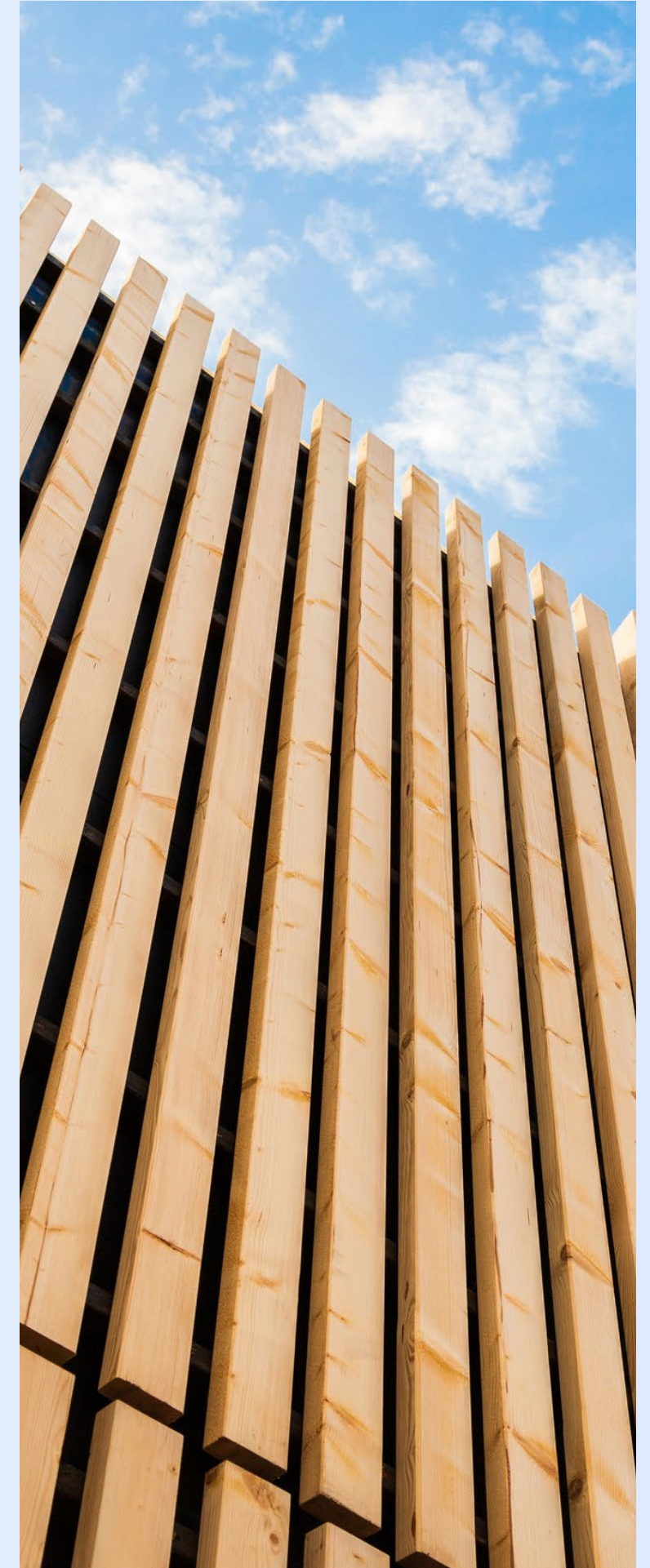
## WHY APACER

### In a World Where **Data is the Driving Force,**

Apacer stands at the forefront of technology, offering cutting-edge SSD and DRAM solutions for both consumer and industrial applications. Our expertise spans a range of use cases, from purpose-driven applications to entertainment, ensuring seamless data storage, processing, and reliability.

At Apacer, we deliver groundbreaking innovative solutions that address these challenges head-on, empowering businesses and individuals to unlock the full potential of their data.

**Access the Best — Where Reliability Meets Innovation.**



# Storage, empowering AI growth

The rapid evolution of AI is redefining how the world operates. As a global leader in digital storage solutions, Apacer delivers purpose-built storage technologies that help customers and partners unlock AI potential—turning data into insight, innovation, and long-term growth.

# APACER AT- A- GLANCE

**28 YEARS**

FOUNDED IN 1997



**6 SUBSIDIARIES**

WORLDWIDE



**3 BIZ SCOPES**

INDUSTRIAL, CONSUMER,  
EMERGING APPLICATIONS



Apacer Offers Cutting-edge SSD and DRAM Solutions  
For Both Consumer and Industrial Applications,  
Revolutionizing How Data Is Managed and Utilized Across Diverse Environments.

**TOP 5%**

OF CORPORATE GOVERNANCE  
EVALUATION  
BY TWSE



**B SCORE**

CPD's CLIMATE CHANGE  
DISCLOSURE

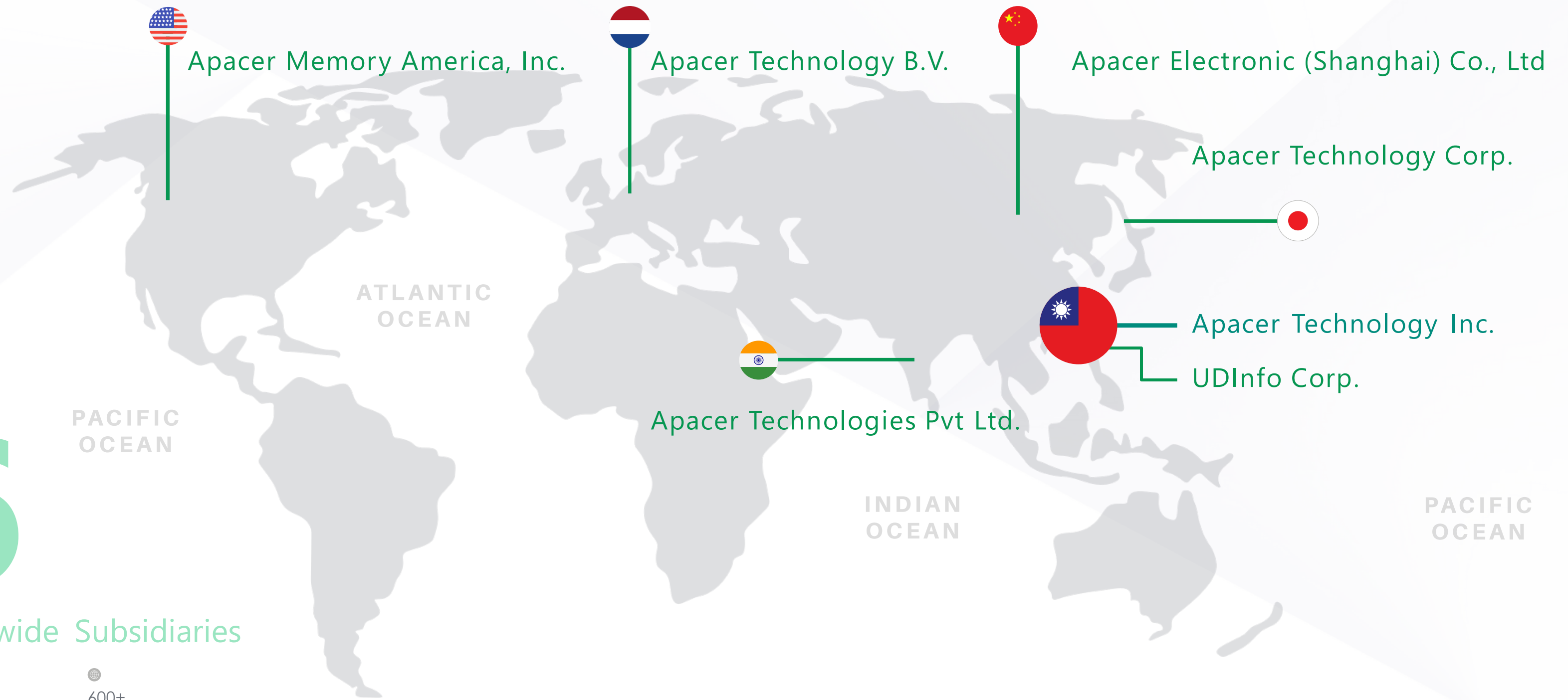


**\$ 356M**

IN 2025 REVENUE  
(NTD11.123B)



## APACER GLOBAL PRESENCE

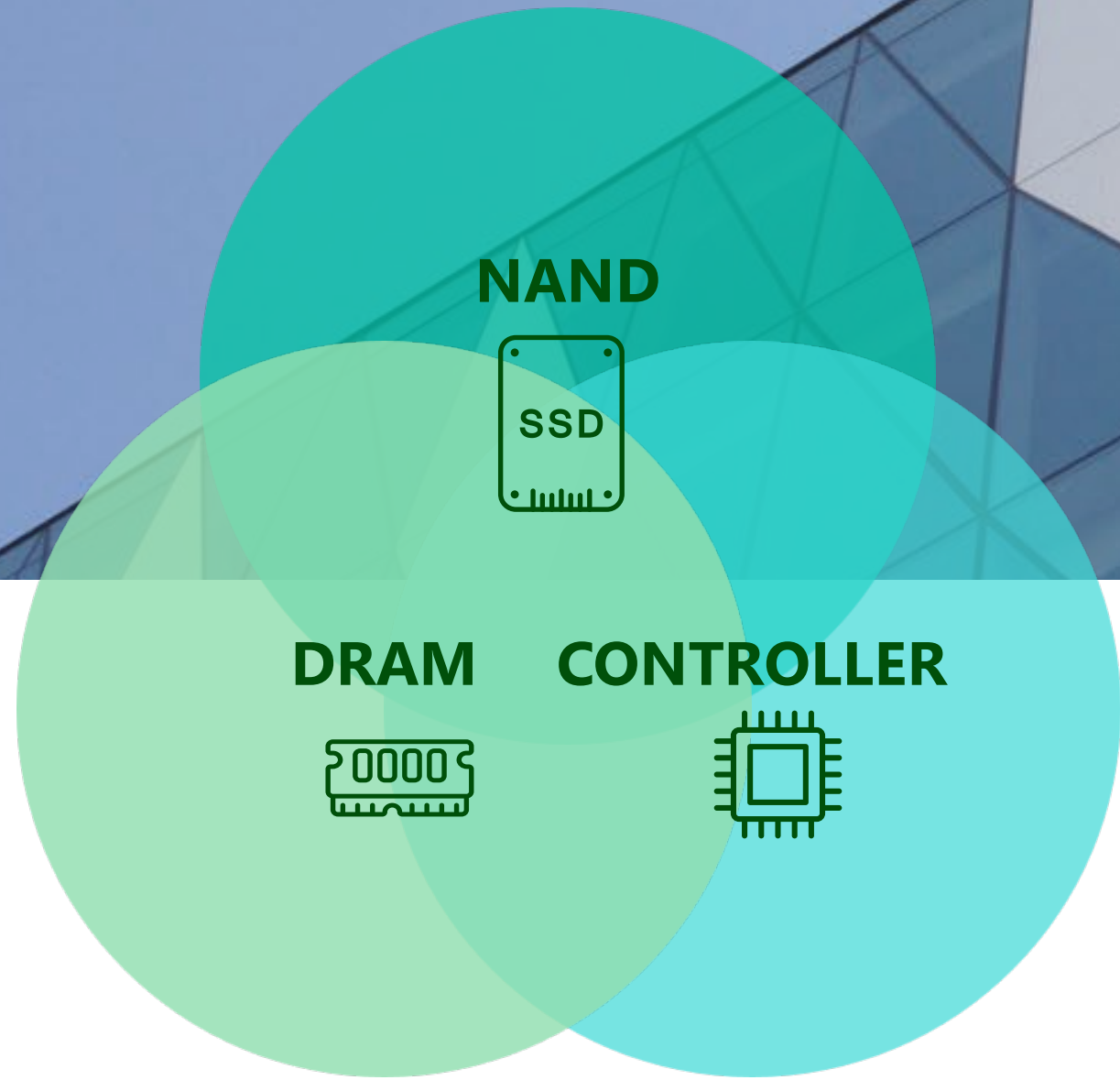


# 6

### Worldwide Subsidiaries

28 Years  
in Business

600+  
Employees



# ECOSYSTEM PARTNERSHIP

Apacer partners with leading global companies to develop innovative storage solutions that enable customers to access the best technology.



## OUR MILESTONES



## BUSINESS SCOPES

Apacer's business scopes include industrial applications, consumer applications, and emerging applications, addressing diverse storage needs across established and innovative markets.



### INDUSTRIAL APPLICATIONS

Memory Modules, Storage Devices and Value-added Solutions



### CONSUMER APPLICATIONS

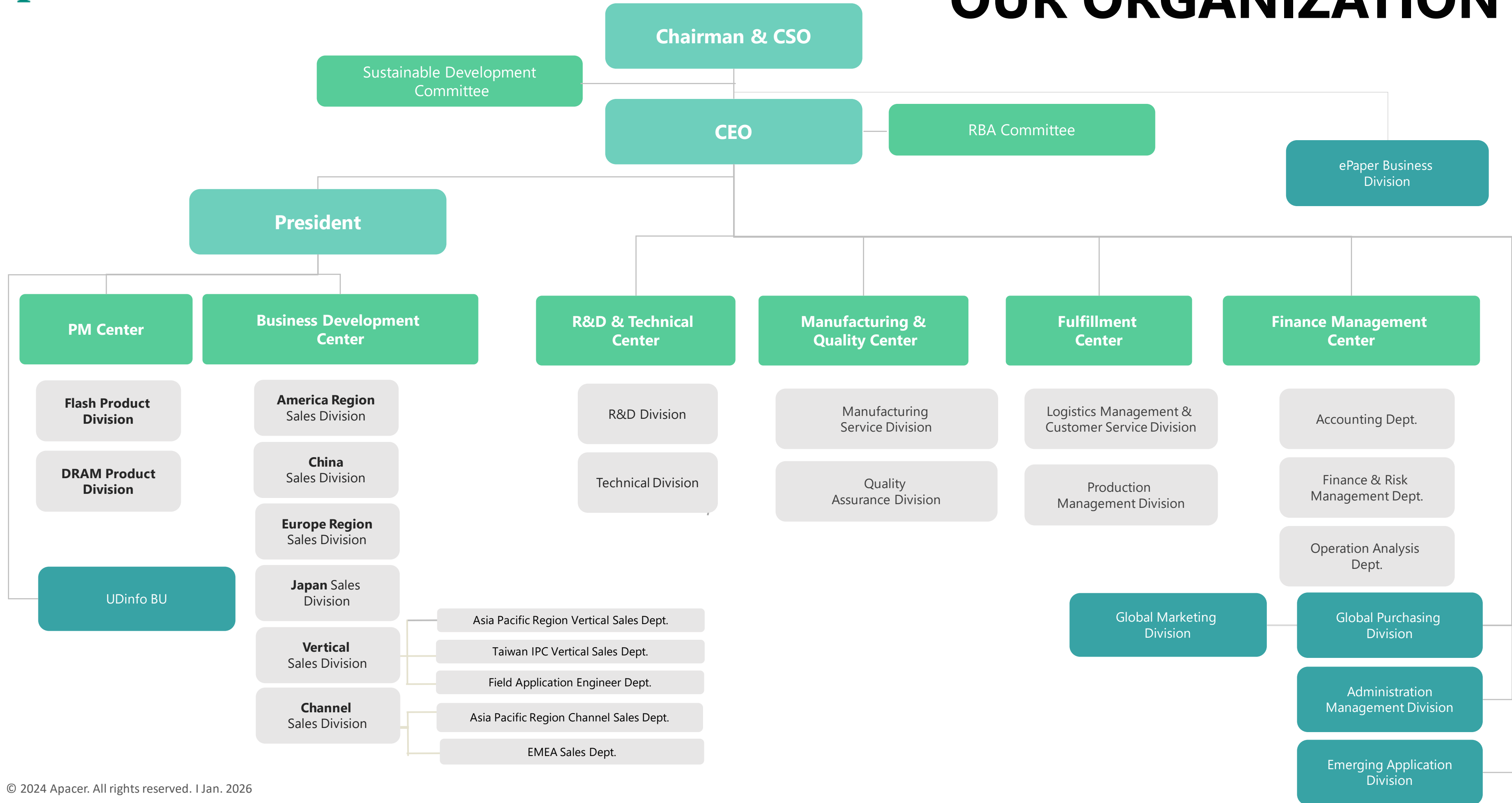
Hard Drive, SSD, Memory Card, USB and Gaming products



### EMERGING APPLICATIONS

Smart IoT and Optical Solutions

# OUR ORGANIZATION



# COMMITMENT TO CORPORATE RESPONSIBILITY



## ENVIRONMENTAL

- Achieved a B score in CDP's Climate Change disclosure
- Launching the World's First Fully Lead-Free SSD
- Hazardous industrial waste was reduced by 5% in 2025 compared to 2024



## SOCIAL

- New Taipei City Department of Labor "Family-Friendly and Workplace Equality" Award Recognition
- Dual-track talent retention rate: 99%
- Employee turnover rate below 2.0%



## GOVERNANCE

- Ranked top 5% of Corporate Governance Evaluation by TWSE (Market Value of NT\$5–10 Billion category)
- Received the Best Taiwan Global Brand Award
- Two products were honored with "Best in Show" awards at embedded world.

## QUALITY, SECURITY & ENVIRONMENTAL CERTIFICATIONS

We prioritize quality, sustainability, and security in every aspect of business operation to maintain industry-leading standards and reduce environmental impact.



**RBA Silver Status**  
(Responsible Business Alliance)



## SOLID R&D CAPABILITY

At Apacer,  
we drive customer success by delivering  
cutting-edge storage solutions and offering end to end software,  
firmware, and hardware customization to meet  
the most demanding requirements.



### R&D Team

- Hardware Design
- Software and Firmware
- Maintain a High Level of Innovation and Engineering Excellence.



### TS Team

- Technical Support
- Collaborate with the R&D team to provide technical support for the rollout of new projects.



### FAE Team

- Comprehensive Pre-Sales and After-Sales Service
- On-Site Real-Time Technical Support

**100+**  
PROFESSIONALS

**200+**  
PATENTS

# WIDE-RANGING PRODUCT LINEUPS

to Empower Your Business



**INDUSTRIAL**



**PROFESSIONAL**



**CONSUMER**



**GAMING**



TAIWAN EXCELLENCE 2025



# Purpose-Built SSD for Industrial Applications

Innovative Solutions Tailored for Reliable Performance in Diverse and Demanding Industrial Environments.

### DATA INTEGRITY

- CoreSnapshot Series
- CoreRescue
- End-to-end Data Protection
- DataRAID™
- Smart Read Refresh™

### SECURITY

- CoreSecurity2
- Instant Keychange™
- Signed Firmware
- NVMe Secure Erase
- TCG Opal 2.0
- Write Protect

### LONGEVITY

- SLC-liteX (100K P/E cycle)
- Over-provisioning
- Page Mapping
- SLC-lite
- S.M.A.R.T.

### POWER STABILITY

- CoreVolt 2
- CorePower
- DataDefender™
- Multi-PowerPath
- DEVSLP

### DURABILITY

- CoreEnergy
- Anti-Sulfuration
- Thermal Throttling
- CoreGlacier™
- Conformal Coating
- Sidefill

### VALUE-ADDED SOFTWARE

- CoreAnalyzer2
- SSDWidget 2.0
- Opaque
- Out-of-band Management

# Purpose-Built DRAM for Industrial Applications

Tailored Solutions Designed to Address the Mission-Critical and Evolving Demands of Industries.

### UNDERFILL



- Strengthens the solder joints between solder balls and printed circuit board
- Increases the product's resistance against shock and vibration
- Complies with MIL-STD-810G shock and vibration requirements

### CONFORMAL COATING



- Uses automated spraying to maintain precise coating thickness
- Enhances product reliability
- Prolongs DRAM modules' lifespan

### ANTI-SULFURATION



Apacer Patented

- World's first anti-sulfuration memory modules
- Solves corrosion problems effectively and increase overall system lifespan

