

## Automotive - Scope Conditions

- Tightness: Vehicle Interior (IP5k2) – Transmission/Underbody (IP6k9k)
- Temperature Strength:
  - 40°C to +150°C Ambient Temperature
- Lifespan:
  - 8000 h (+ extended 23000 h for BEV)
- ASIL (Safetylevel): QM – ASIL C
- Volumes (typical): ~50k – 2.5 million
- Applications:
  - Transmission Control Device, Pump Control, Motor Control (DC, BLDC, Stepper), Valve Control, Smart Actuators, Exterior Lighting
- SW Scope: Communication, Motor Driver, Diagnostics, MCAL, AUTOSAR
- Communication: LIN, CAN (FD), Flexray
- Specialities: Conformal Coating, Potting

## Selection of our customers

(direct and indirect)



# melecs

- Austrian Electronic Engineering and Manufacturing Service provider (E2MS)
- Over 25 years of experience
- Production facilities in Austria, Hungary, China and Mexico
- Over 1500 employees
- Sales revenues over 287 million euros
- Low-Volume, High-Mix production in Lenzing/Austria
- US Sales & Engineering Office in Auburn Hills/Michigan

## Melecs EWS GmbH

Global Sales

GZO - Technologiestrasse 1  
7011 Siegendorf, Austria

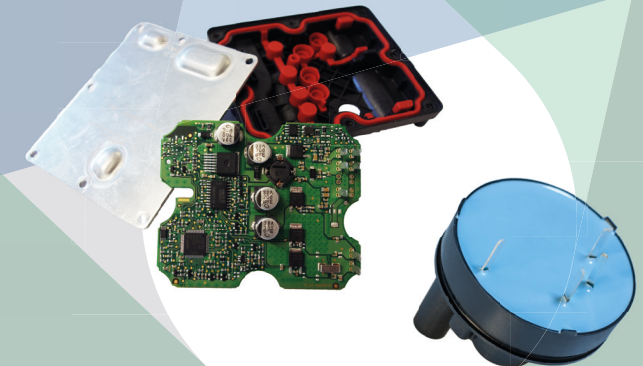
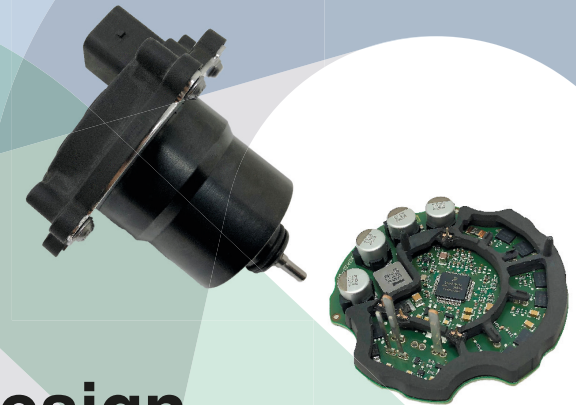
Phone +43 57577 1003  
sales@melecs.com

[www.melecs.com](http://www.melecs.com)

 **melecs**  
making electronics smart

# automotive electronics

# design validation manufacturing



## ECUs for All-Wheel-Drive Systems



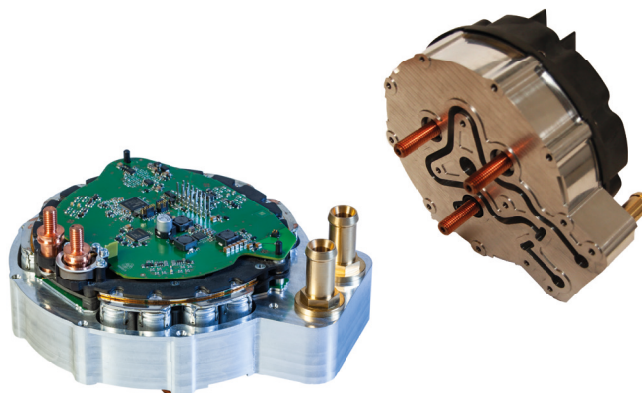
All-Wheel-Drive ECU - potted  
for Golf 8 - new generation (2020)



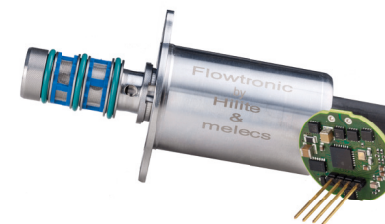
All-Wheel-Drive ECU  
for Porsche, BMW, Lamborghini, Audi



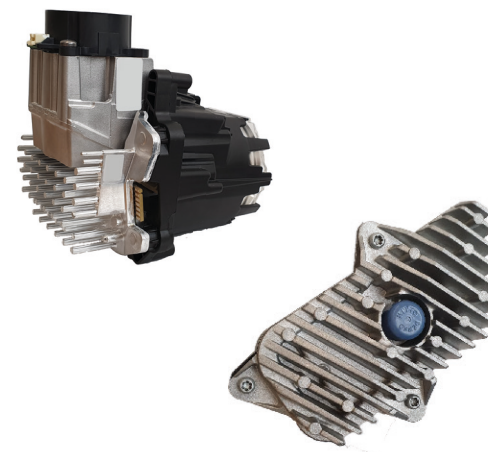
## 48V Applications



## Flowtronic Valve



## LED Lighting



## Car Sensor Applications

