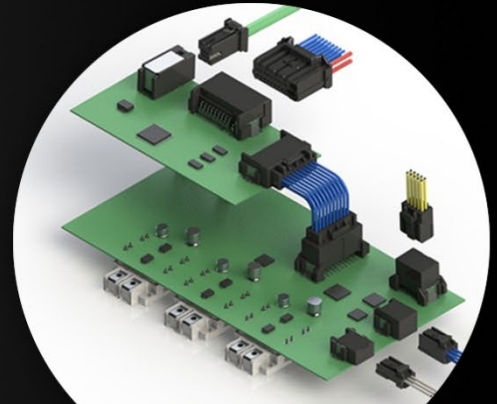


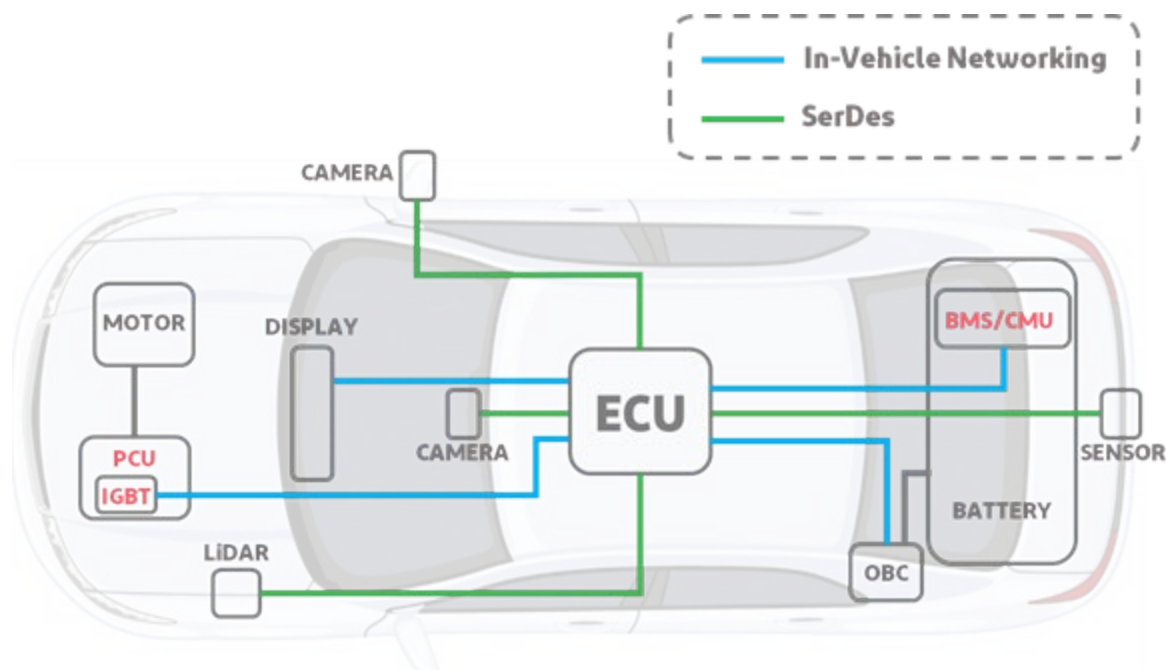
MOBILITY

Connector Use Case



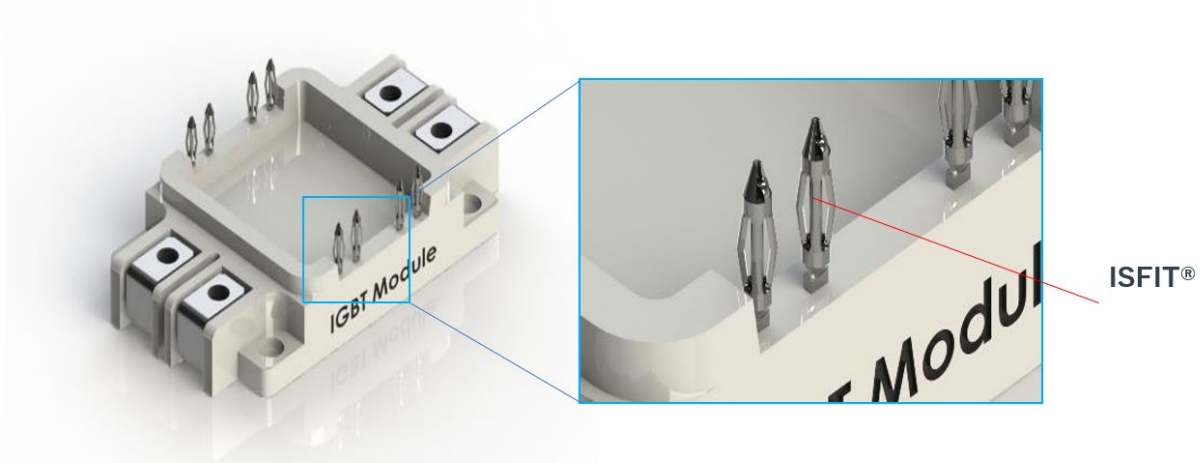
I-PEX Connectors for Automotive Industry

I-PEX offers a variety of connectors that are ideal for the automotive industry. Below are some use case examples for typical automotive applications such as IGBT, PCU and BMS/CMU.



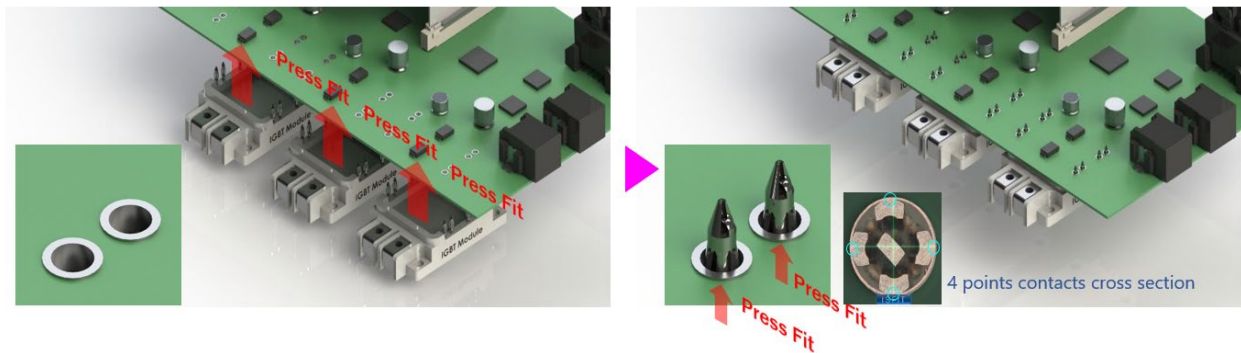
IGBT

What is IGBT? **I**nulated **G**ate **B**ipolar **T**ransistor



This power semiconductor switch is used for switching inverter circuit for motor driving.

Using ISFIT®, our unique solderless press fit terminal, for IGBT modules can eliminate the conventional soldering process. Furthermore, the ISFIT helps to minimize the risk of damage to the circuit board and improves assembly workability by using lower insertion force than the conventional eye-of-needle type terminal.



PCU

What is PCU? **P**ower **C**ontrol **U**nit

This is used to receive signals from vehicle and controlling IGBT module for power control.

