


A photograph of industrial machinery, likely a robotic assembly line, with a focus on electronic components. The scene is dominated by blue and teal tones. In the foreground, several green printed circuit boards (PCBs) are visible, some with yellow and red components. A robotic arm with a yellow light is positioned above the boards. The background shows more machinery and a perforated metal panel.

**SCHIEDERWERK**

A stylized graphic of a circuit board pattern, consisting of white lines and circles on a teal background, representing electronic connectivity and innovation.

emPOWERING  
**INNOVATIONS**





# Pioneer for customized power supplies.



## Experts

We are experts in the field of custom power supplies with a focus on industry, medical technology, lighting, and e-mobility. With just under 200 employees at our Nuremberg location, we help our customers to successfully implement innovations.



## Experience

For more than 100 years, we have stood for the development, production, and worldwide marketing of customized solutions for our customers. With our know-how and experience, we are in an excellent position to face the challenges of the future.



## Employees

All our employees have a great deal of expertise and talent in their respective fields. In many successful customer projects, whether in development or production, they gained in-depth knowledge of the specific requirements of the respective customer industry. This enables us to combine technical and customer-specific knowledge and manufacture exactly the right power supplies for our customers.



## Customers

It makes us proud that a majority of our national and international customers have trusted us and our products for decades. We excel thanks to seamless integration into the customer's development process, our fast response to fluctuating order quantities during the product life cycle, and the rapid adaptation of new requirements to existing products.

# Individual Development.

## Specifications far away from off-the-rack products

The majority of our customers are innovation leaders in their segment, such as in the field of special UV drying processes, innovative applications in medical technology, or new products in the growing e-mobility sector. Our customers mostly have individual requirements for the power supply of their product, that can only be met by “off-the-rack” products or adjusted standard products with limitations or not at all. That is why we develop individual power supplies that are 100% tailored to the needs of our customers. Whether it’s special input and output parameters, special operating conditions, or challenging available space in the end product – our development engineers always find the best solution.

### **Our team of developers.** **Experts with a hands-on mentality**

We develop customized power supplies on equal terms and guarantee a successful end product through constant trusting communications with our customers. Your most important contacts: Our development engineers. They work on the entire project – from the first briefing, to the prototyping and pre-production, until the end of the product life cycle. Above all, they are characterized by their hands-on mentality. Their high level of education and their deep application knowledge combined makes them experts in the development of individual power supplies. Due to their proximity to production, the engineers accompany the production of “their” projects over the entire product life cycle. In this way we ensure high manufacturing stability, can react quickly to changing requirements, and always have a specialist contact person for all employees involved in the production.

### **Our development process.** **Step by step to mass production**

As unique as the power supplies developed by us are, the requirements for integration into the customer’s own development process are just as unique. With the help of our more than 100 years of development experience, we enable the integration that makes the most sense for the customer and the overall project. Whether the final product is developed using the classic waterfall model or SCRUM – we always succeed in finding just the right integration.

A development project of an individual power supply often starts with us even before the classic specification sheet. Even when the specifications are being drafted, our development engineers are in intensive communication with the customer’s developers. They help to find the best balance between what is hypothetically possible and what are actually meaningful specifications. This unusually early involvement is what makes us special. And thus even before the first functional specifications it’s guaranteed that the production of the planned power supply is later feasible.











# Everything from a single source.

## Development and production under one roof

We are a one-stop supplier of power electronics. We make this possible by having all departments work together under one roof at our Nuremberg location: from the development department, which lays the foundations for our successful products, through our entire production and test laboratories, to our own testing equipment and fixture construction. By doing this as a manufacturer of power supplies and power electronics, we guarantee that all our products are "Made in Germany."

Due to the close proximity of colleagues to each other, all employees involved in a project have frequent face-to-face discussions. The result: fast response times and the ability to promptly respond to changing customer demands at every stage of the product life cycle.



### **Our production. State-of-the-art machinery meets decades of experience**

Our entire production follows the principles of Lean Production. For us this means more than just short production paths and careful use of resources. For example, we are constantly looking for ways to improve our production processes. We work with one of the most modern SMD placement lines on the market and plan our production using agile methods. This allows us to overcome every challenge quickly and reliably: Be it a short-term increase in the production of LED drivers to many thousands of pieces, the simultaneous production of an SMPS product sample, or the parallel production of several different products in different quantities.

### **Pilot run production. Dress rehearsal for high volumes**

Pilot run production is an important component of the following mass production. It has a similar function to dress rehearsal in the theater. With its help, we can check whether mass production in the planned quantity and above all quality will work.

We are already producing the first product samples on the later production line under real conditions. We create and test all relevant processes, test equipment, and devices in-house during the development phase. This not only helps in the subsequent production quality, but allows us to produce the pilot run soon after completion of the product samples.

# Quality that counts.

Quality is an integral part of our corporate philosophy and the basis for our success. And has been ever since our company was founded in 1919. Today we are ISO 9001 and ISO 14001 certified. In addition, we've had a Quality Management System (QMS) in place since 1997.

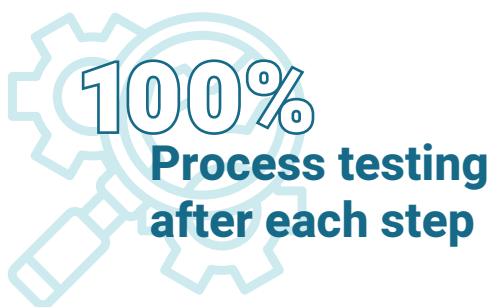
Quality is more than strict adherence to specifications and processes for us: For us, quality comes first and foremost from the high standards of each individual employee for the outstanding execution of their work.

## Quality management. When quality becomes predictable

We constantly review and adjust our processes and work steps. This enables us to achieve a product quality that far exceeds the expectations of our customers. The predictability of quality plays an important role. We are constantly changing and continue to develop our quality management. We streamline processes where needed and use a variety of tools to predict and positively influence the quality of our products. Customer Specific Requirements (CSR) also flow into our quality management.

## Zero margin for error. When machines have the better eye

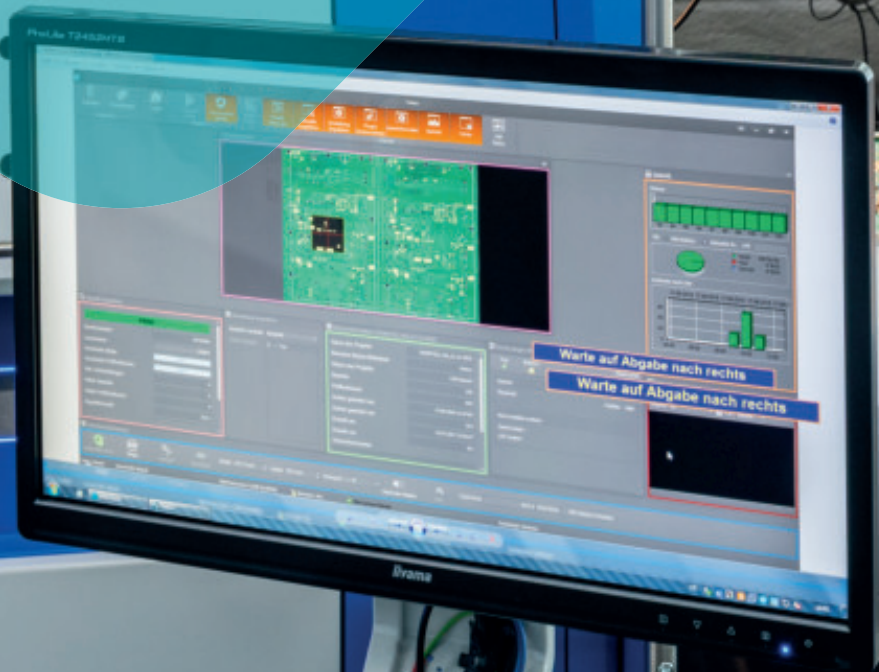
Every single product manufactured by us is extensively tested after each process step. We carry out incoming goods inspections of the materials used, use several state-of-the-art (two-sided) AOI systems and various performance tests under end-use conditions. Burn-in tests to anticipate component-specific aging processes and 100% end-of-line (EOL) testing are also used. And we do this for every single product we make. Our in-house testing equipment construction makes it easy to map every conceivable test scenario and integrate it into the production process. This extensive testing depth along the entire production chain guarantees the high quality and reliability of our power supplies.






GOPEL  
electronic

VARIO LINE





# Applications, we know well.

## Lighting

- Large-area lighting
- Sports venue lighting
- Stage and studio lighting
- Effect lighting
- Lighting systems for crash test facilities

## E-Mobility

- Battery balancer
- Universal battery charging systems
- Regenerative discharge units
- Complete constant current sources

## Industry

- UV drying for printing technology
- Cold light plasma generators
- Measuring instruments and radio stations
- Laser generators
- Sun simulation
- Water disinfection





## Medical technology

- X-ray equipment
- Ultrasound equipment
- Electric dental treatment centers
- Electric operating tables
- Light sources for endoscopy systems
- OR lighting





SCHIEDERWERK GmbH | Neuburger Str. 40 | 90451 Nuremberg | [info@schiederwerk.de](mailto:info@schiederwerk.de) | +49 911 9636-5

**SCHIEDERWERK**

A DIVISION OF GROUPE *LEGRIS* INDUSTRIES