



HUMAN CENTERED DIGITAL SOLUTIONS. TOGETHER



TABLE OF CONTENTS

4-5 **Ideation & Innovation**
Together, as a value network,
for new innovative solutions and
products

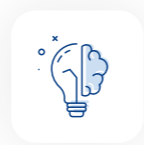
8-11 **Production**
Flexibly scalable and leanly
structured production services

16-17 **Why work with us?**
Working together to generate
value for people along the entire
value chain

6-7 **Engineering**
Development of custom-fit
embedded systems and
cyber-physical systems

12-15 **Quality & Life Cycle**
Support for your equipment in
the field and your product
throughout its life cycle

18-19 **Contact**
We look forward to the first
conversation in order to
identify potentials



IDEATION & INNOVATION

The basis and center of interest of every revolution are human beings: their wishes and needs and their interaction with solutions and products. Successful sustainable innovation can only be realized in a benefit and user-centered way.

Together, we analyze and optimize user experiences, added values and entire value chains – no one can do it alone.

CycleUp - Agile Concept Solutions



CycleUp is your accelerator in the development of embedded systems - from the idea to the product concept.

In collaboration with you, we create full-custom minimum viable products (= MVP) and use the build-measure-learn approach to develop ideas into mature product concepts. CycleUp thus accelerates product development and promotes efficient, customer-specific innovations.

3 simple steps from the idea to the mature product concept.



Why work with us?

We offer you complete and professional support from ideation and prototype development to proof-of-concept and business case development. Let us benefit as a team from each other's creativity, know-how and ideas, and design an innovative, value-added product.



Unfair advantages
Develop and discover



Partner Eco-
System Concepts



Fail-Early Approach
(Identify pitfalls)



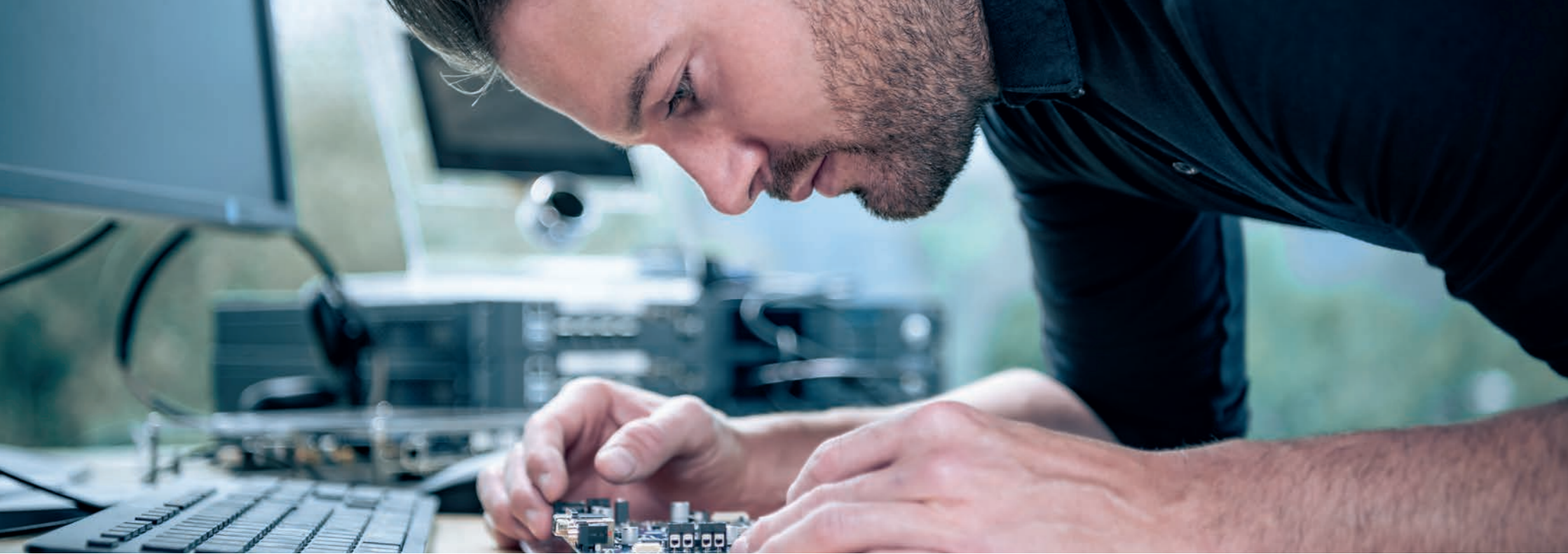
Formulate hypotheses
and test



Grow, Scale &
Learn approach



Rapid Concepts and
Feasibility Studies



ENGINEERING SERVICES

We are convinced of the potential of digital systems for people. Together with you – our partners – we want to develop new solutions for people through tailored and

innovative embedded systems and cyber-physical systems to generate real added value for people along their individual value chains.

Our core know-how



Requirements engineering and management



Software-Engineering



Integration and verification



Mock-Ups & Prototyping



Elektronik-Engineering



Transparency and co-engineering



System architecture and design



Mechanical Engineering



Professional project management

Our product development and design approaches



Design for Manufacturability



Design for Maintainability



Design for Security



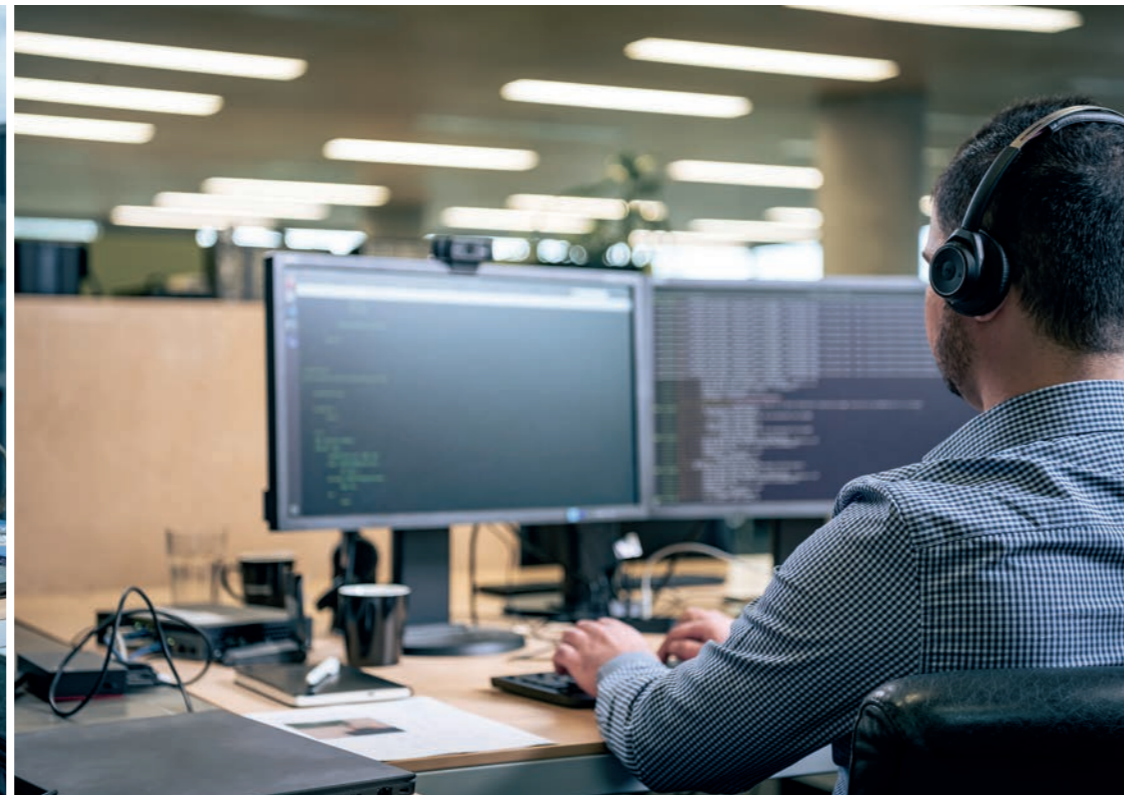
Design for Quality



Design for Reliability



Design for Approval






PRODUCTION SERVICES


Flexibly scalable and lean structured production services at the highest quality level. We always accompany you professionally in the production of embedded systems


and cyber-physical systems, starting with small series up to mass production, in order to grow with you.


Production and assembly in the highest quality


For more than 25 years, we have regarded the production and assembly of embedded systems and cyber-physical systems at the highest quality level as an important component in our service portfolio. In doing so, we attach great importance to scalability through flexibly adaptable processes and lean management strategies, in order to always be able to accompany series professionally and appropriately, starting with small series up to mass production. Our core know-how covers the following areas:


- 


Modular assembly line workstations
- 


Optimized flow of goods
- 


Short setup times and easy scalability from small batch to mass production
- 


Digitally controlled manufacturing Processes
- 

High manufacturing breadth from electronics to electromechanics to display & touch
- 

Digital product files for optimized traceability at component level
- 

Professional manufacturing organization (LEAN, 5S, KANBAN, KVP, Shopfloor Management)
- 

Ergonomic workstations for consistent quality and maximum output
- 

Continuous quality assurance, embedded in the manufacturing process
- 

High Security Area with BSI-certified processes

Design transfer

Flexible production
 Planning, conceptual design and introduction of product and/or customer-specific production lines

Design for Manufacturing
 Engineering know-how for the optimal combination of customer requirements and production-optimized product design

Processes & documentation
 Creation and introduction of product-specific manufacturing processes and standard-compliant manufacturing documentation



PRODUCTION SERVICES

Supply Chain Management

High-quality and timely production always includes a precisely fitting supply chain. As part of our supply chain management, you benefit from our long-standing partnerships with many well-known manufacturers and suppliers qualified by us for a wide range of electronic components, parts and assemblies. Together with you, we set up a supply chain concept optimized for your product and your requirements. In doing so, supply chains are strategically designed and built up over the entire [product life cycle](#), starting with the procurement of samples and prototypes, through the supply of series orders, to the area of [repair & maintenance service](#).



Quality first approach

Procurement exclusively via manufacturer and authorized dealers



Flexibility

Inclusion of your preferred suppliers in the supply chain



Sourcing

Implementation of individual sourcing strategies and supply agreements

Individual logistics services



Kanban

Customized Kanban systems



Delivery concepts

Export services, direct delivery, supervised transports, drop shipments



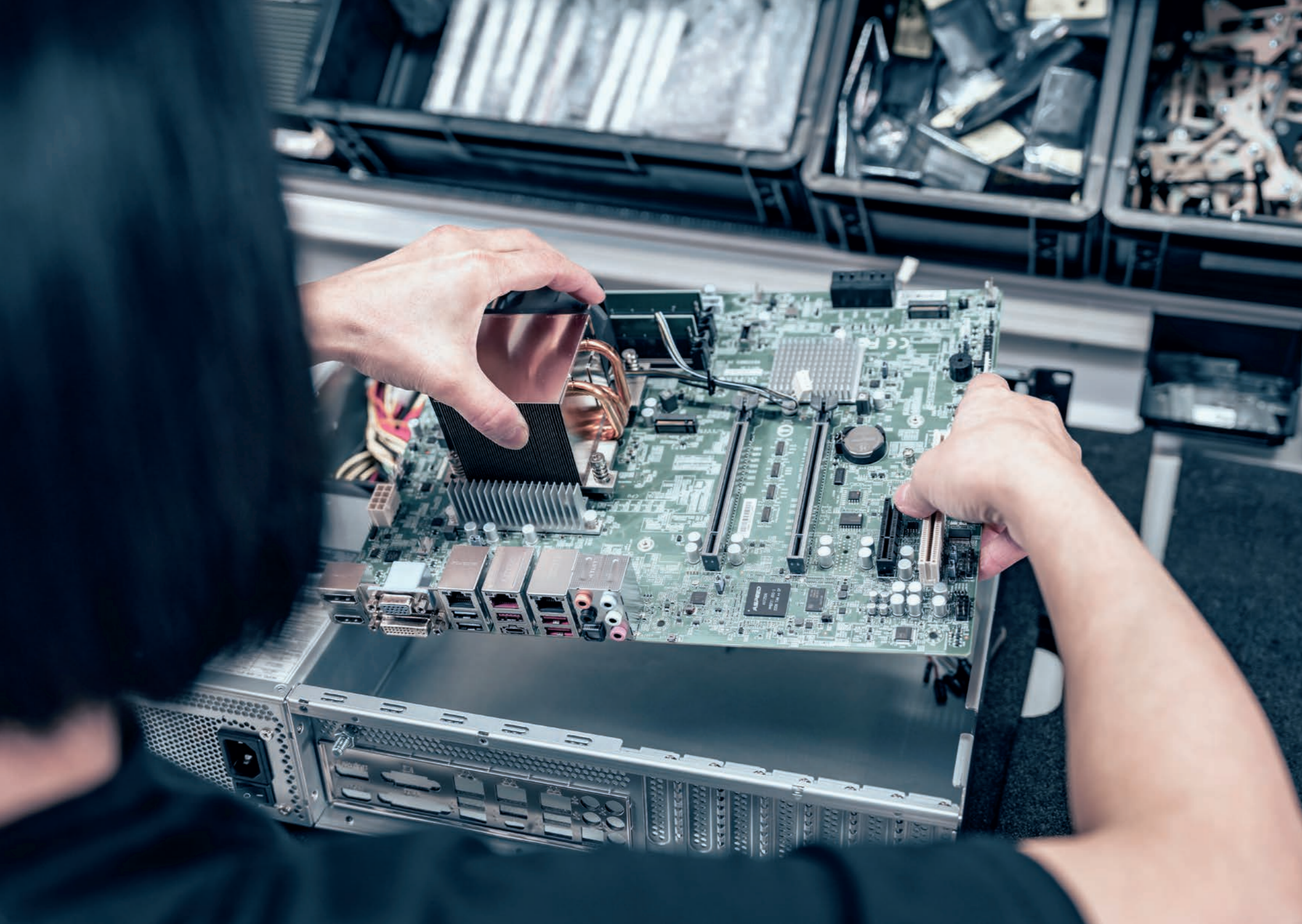
Packaging services

Customized packaging and palletizing



Tracking

Track & Trace service



QUALITY & LIFE CYCLE SERVICES

As your reliable partner, we consider it a matter of course to accompany you and your product throughout the entire product life cycle. Our Quality & Life Cycle

Services ensure both the functionality of your equipment in the field as well as the viability of your product itself.

Technical Services

Reliability and the highest product quality are part of our identity and self-image. Our technical services ensure minimal downtime in the field and transparent costs. The goal is always to minimize inconvenience for your end customers.



Individually adaptable service processes incl. response times



Customized warranty services & Warranty management



Maintenance models with Loaner service



Recycling service of your decommissioned systems



Individually definable Refurbishment services



Individual quality Reports / findings

Quality Services

We regard top product quality and reliability as an important basis for trust in us as a strategic partner. Our logical goal and common ambition is, therefore, not only to promise quality, but to proactively promote it.



Sustainable and methodical quality management (e.g. 8D, SPC, FMEA, initial sampling)



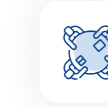
Quality planning and controlling over the entire product life cycle



Conclusion of quality assurance agreements #



Management of product, process, and system audits throughout the supply chain, including individually set suppliers



Planning and implementation of quality workshops



QUALITY & LIFE CYCLE SERVICES

Regulatory Services

In addition to product development and production services, we have many years of experience in the area of regulatory requirements and challenges in various industries. In addition to our ISO 9001 and 13485 certifications, we advise and support our partners in all matters relating to "product compliance throughout the entire product life cycle".



Support of national and international approvals



Regulatory requirements survey



Creation and review of Technical documentation



Obtain, monitor and maintain test marks including audits and factory inspections



Risk management according to ISO 14791 for medical technology



Risk management according to CENELEC Guide 32 for low-voltage equipment



Assumption of manufacturer obligations for conformity assessment - Product as a service



Legal Compliance – RoHS, REACH, conflict minerals, Batterien, ADR, Dual use, EAR etc.

Product Life Cycle Services

In addition to the functionality of your products, we also attach particular importance to maintaining their viability. As part of our Life cycle services, we therefore proactively work on solutions and the necessary documentation throughout the entire product life cycle in order to be able to respond quickly and, where possible, preventively to changing markets, regulatory requirements or procurement situations.



Active planning, control and monitoring of the product life cycle



Variant management for large product variety and precisely fitting products



Management of Technical Documentation



Revision management for secure and traceable changes



Alternative parts management for long availability of product specifications



Product observations



WHY WORK WITH US?



Expertise

- People-centric approach/value-added focus
- Buildingblocks for faster development cycles
- Specific industry know-how



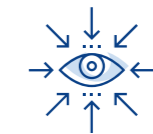
Flexibility

- Adaptation to your processes
- Scalability in production
- Freely selectable entry times



Mindset

- Partnership approach
- Co-Creation and Co-Ideation Approach
- 100% transparency (common working platforms)



Vision

- Creating value together
- Value networking
- For the human

CONTACT

S.I.E Headquarters
System Industrie Electronic GmbH
Millennium Park 12 | A-6890 Lustenau
T+43 5577 89900 | F+43 5577 89901

S.I.E Site Landshut
System Industrie Electronic
Deutschland GmbH
Altstadt 72 | D-84028 Landshut
T+49 871 9657 8070 | F+49 871 9657 8072 0

S.I.E Site München
System Industrie Electronic
Deutschland GmbH
Frauenstrasse 28 | D-82216 Maisach
T+49 8141 34758 0 | F+49 8141 34758 499



Contact us now

Are you in the ideation, development or production phase for a new or further developed product? Let's talk about the possibility of collaboration now.

+43 5577 89900

info@sie.at

www.sie.at

