



WET TANTALUM CAPACITORS

THE ULTIMATE RELIABILITY AND PERFORMANCE CHOICE FOR EXTREME APPLICATIONS

IN A NUTSHELL

KEY FACTORS

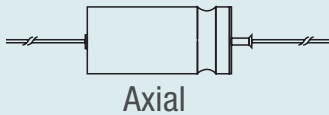


Capacitance
Performance
Energy
Temperature

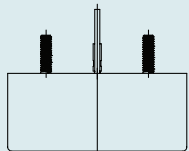
QUALIFICATIONS

- M39006/09/21/22/25/30/31/33
- DLA 06013/06014/06015/06016
- DLA 04003/10004/10011/13017/15008/93026
- CECC 30202/001/002/004/005/801

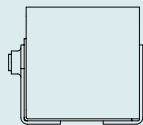
LEAD CONFIGURATIONS



Axial

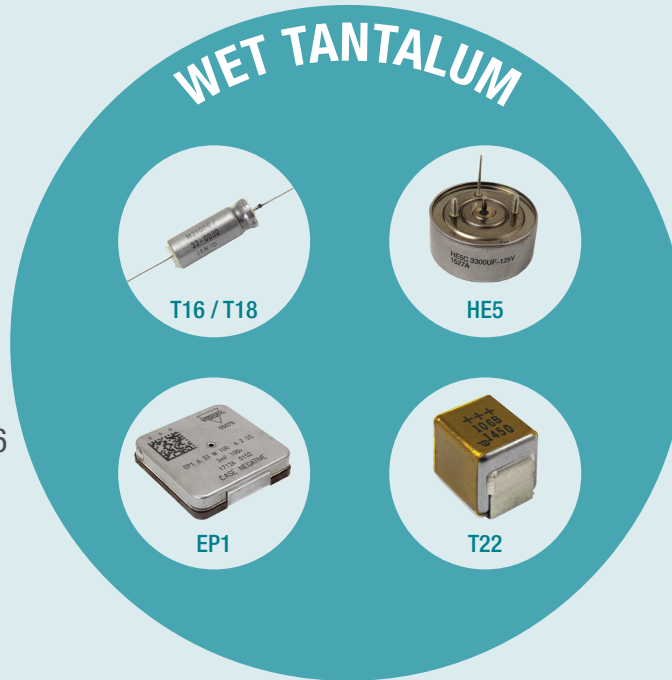


Radial

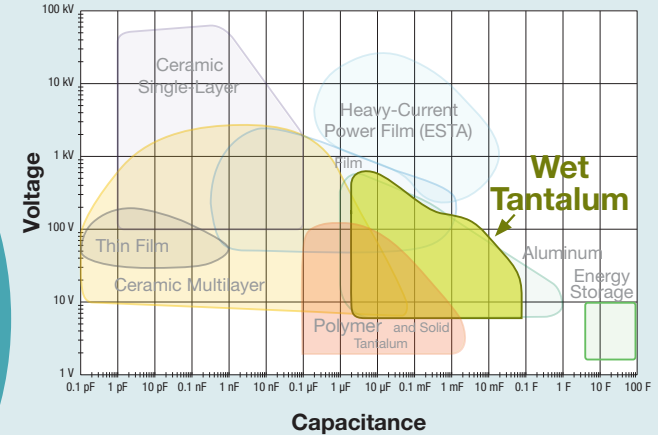


SMD

TERMINATION OPTIONS Tin / Lead
Lead (Pb)-free (100 % tin)
RoHS-compliant



VISHAY CAP MAP



APPLICATIONS



AVIONICS

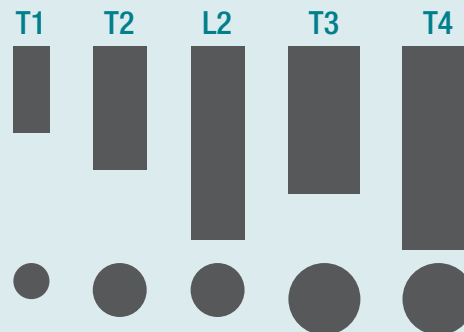


OIL and GAS



SPACE

VISHAY CAPABILITY



FOOTPRINT + PROFILE



Shown at actual size (when viewed or printed at 100 %)



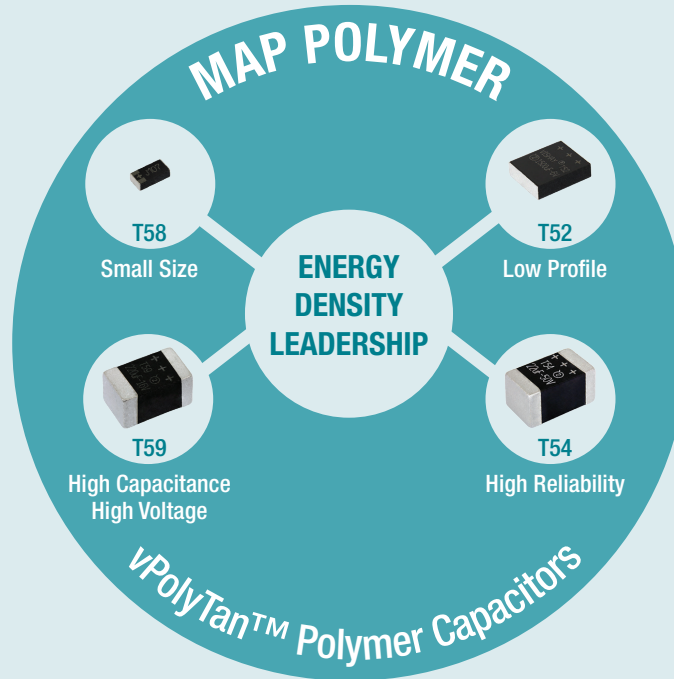
MAP POLYMER CAPACITORS

HIGH ENERGY DENSITY CAPACITORS

IN A NUTSHELL

DERATING

		Standard Tantalum	Polymer
Example	Specified Derating	50 %	20 %
	Rated Voltage	10 V	6.3 V
	Design Voltage	5 V	5 V



TERMINATIONS

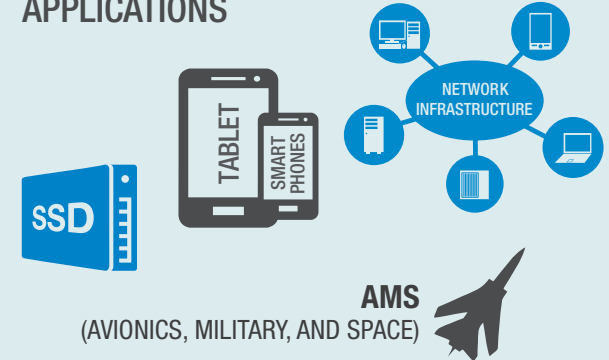
L-Shaped
(T58, T52)



Wraparound
(T59, T54)



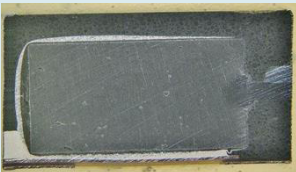
APPLICATIONS



VISHAY MAP MEANS MORE CAP

Large anode size

MAP



Molded



Examples:

T58 – 330 μ F at 6.3 V, BB case size

T58 – 47 μ F at 6.3 V, M0 case size

T52 – 330 μ F at 16 V, M1 case size

T59 – 470 μ F at 16 V, EE case size

VISHAY FOOTPRINT AND PROFILE CAPABILITY

T58								T52		T59	T54
BB	B2	B0	A0	W0	W9	M0	MM	M1	E5	EE	EE
0.138 (3.5) 0.11 (2.8)	0.138 (3.5) 0.11 (2.8)	0.138 (3.5) 0.11 (2.8)	0.126 (3.2) 0.063 (1.6)	0.079 (2.0) 0.049 (1.25)	0.079 (2.0) 0.049 (1.25)	0.063 (1.6) 0.033 (0.85)	0.063 (1.6) 0.033 (0.85)	0.287 (7.3) 0.236 (6.0)	0.287 (7.3) 0.169 (4.3)	0.287 (7.3) 0.169 (4.3)	0.287 (7.3) 0.169 (4.3)
0.079 (2.0)	0.042 (1.2)	0.039 (1.0)	0.039 (1.0)	0.039 (1.0)	0.035 (0.9)	0.039 (1.0)	0.035 (0.9)	0.079 (2.0)	0.059 (1.5)	0.169 (4.3)	0.169 (4.3)

Shown at actual size (when viewed or printed at 100 %)

Profile in inches (millimeters)

For Technical Questions: polytech@vishay.com

© 2017 VISHAY INTERTECHNOLOGY, INC. ALL RIGHTS RESERVED.

VMN-MS7360-1707